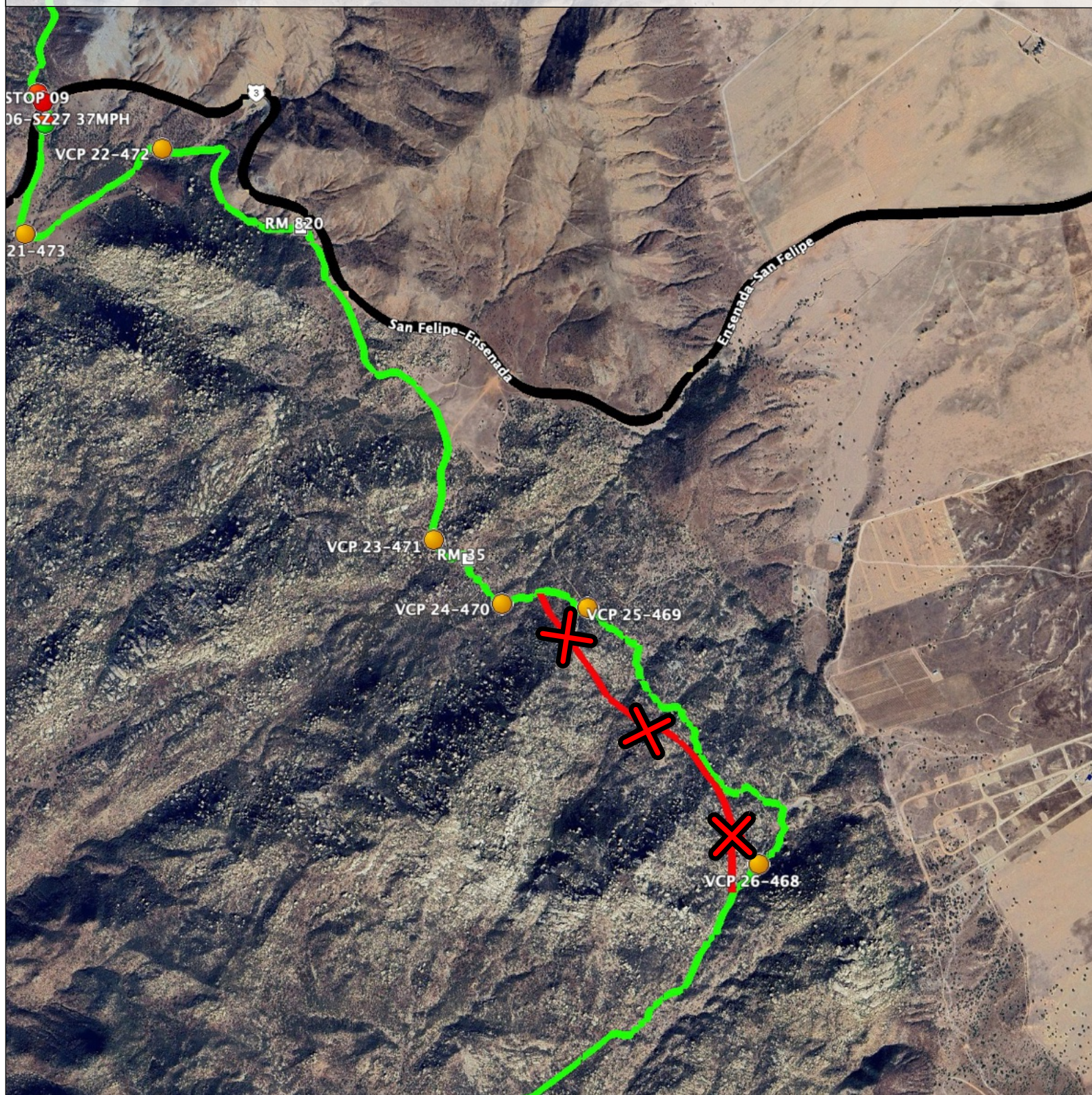


# FORBIDDEN LINES

## LINE 01

10.30.2025

- For **ALL CATEGORIES / CLASSES**.
- Race Course in **GREEN**.
- Forbidden trails in **RED**.
- Penalty: from 4 hours to disqualification.
- Reference: RM 35. Rancho Grijalva.



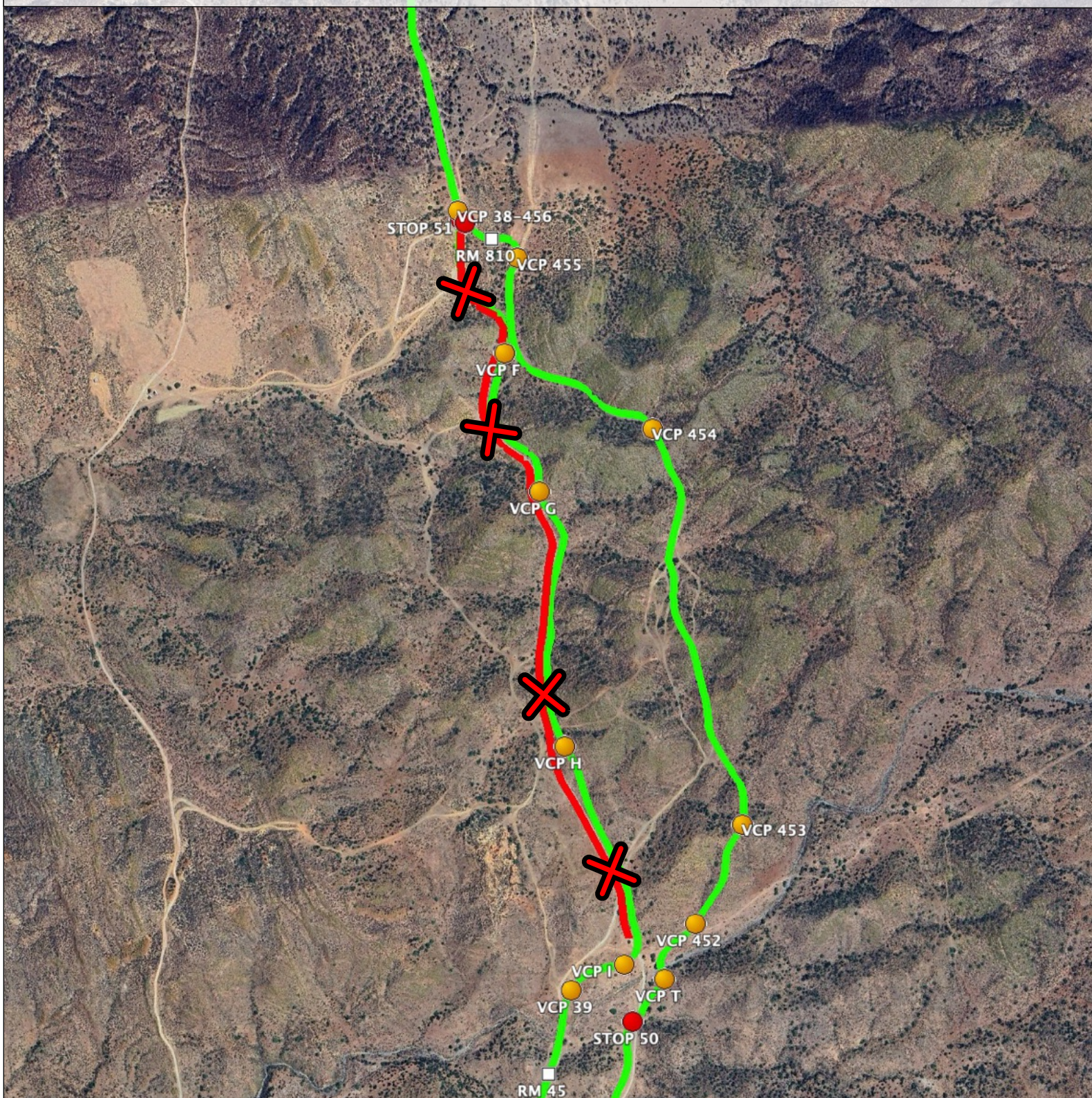


# FORBIDDEN LINES

## LINE 02

10.30.2025

- For **ALL CATEGORIES / CLASSES**.
- Race Course in **GREEN**.
- Forbidden trails in **RED**.
- Penalty: from 4 hours to disqualification.
- Reference: RM 44. Ojos Negros - 3 Hermanos Road.



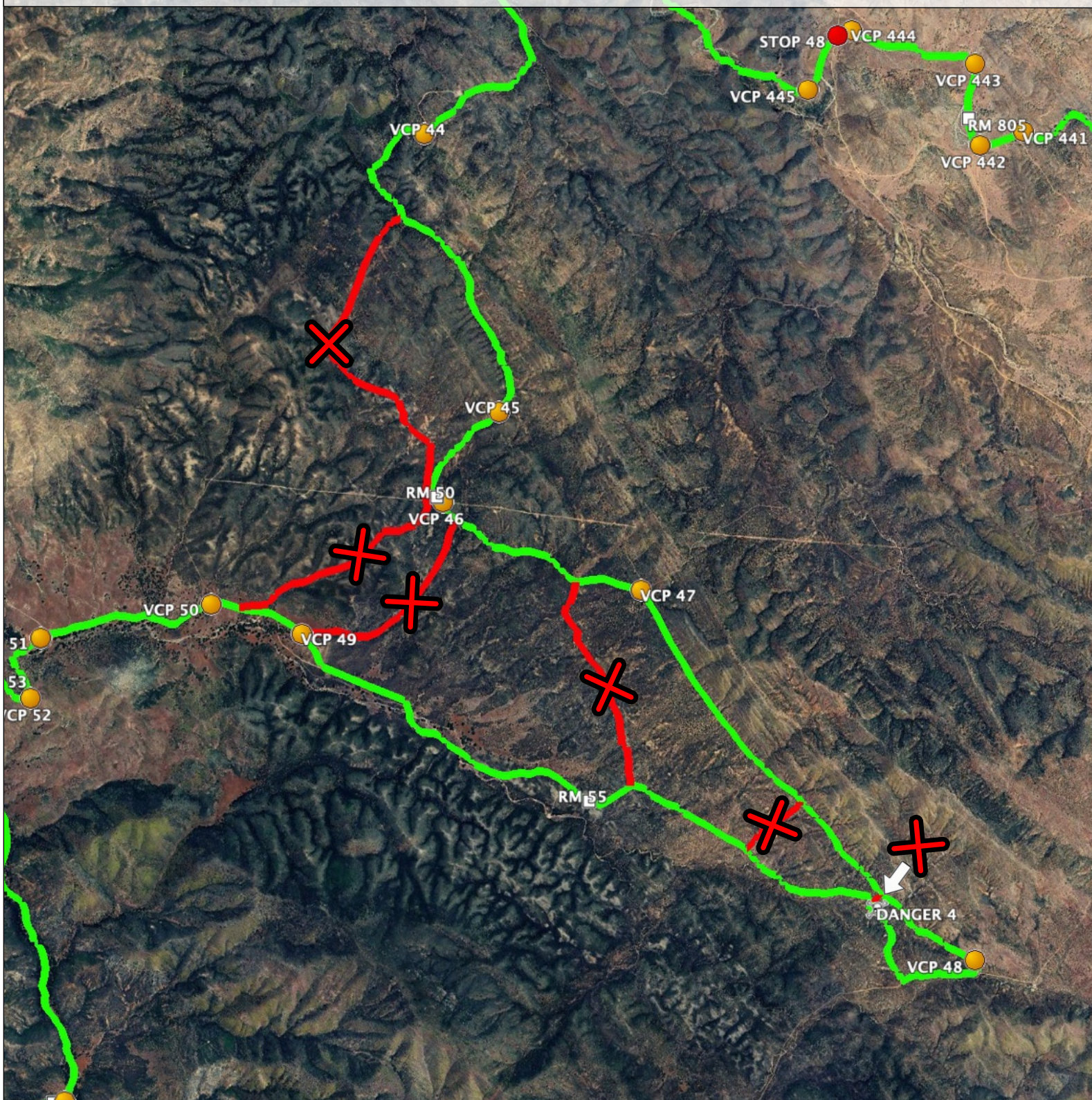


# FORBIDDEN LINES

## LINE 03

10.30.2025

- For **ALL CATEGORIES / CLASSES**.
- Race Course in **GREEN**.
- Forbidden trails in **RED**.
- Penalty: from 4 hours to disqualification.
- Reference: RM 50. R. Los Encinitos.



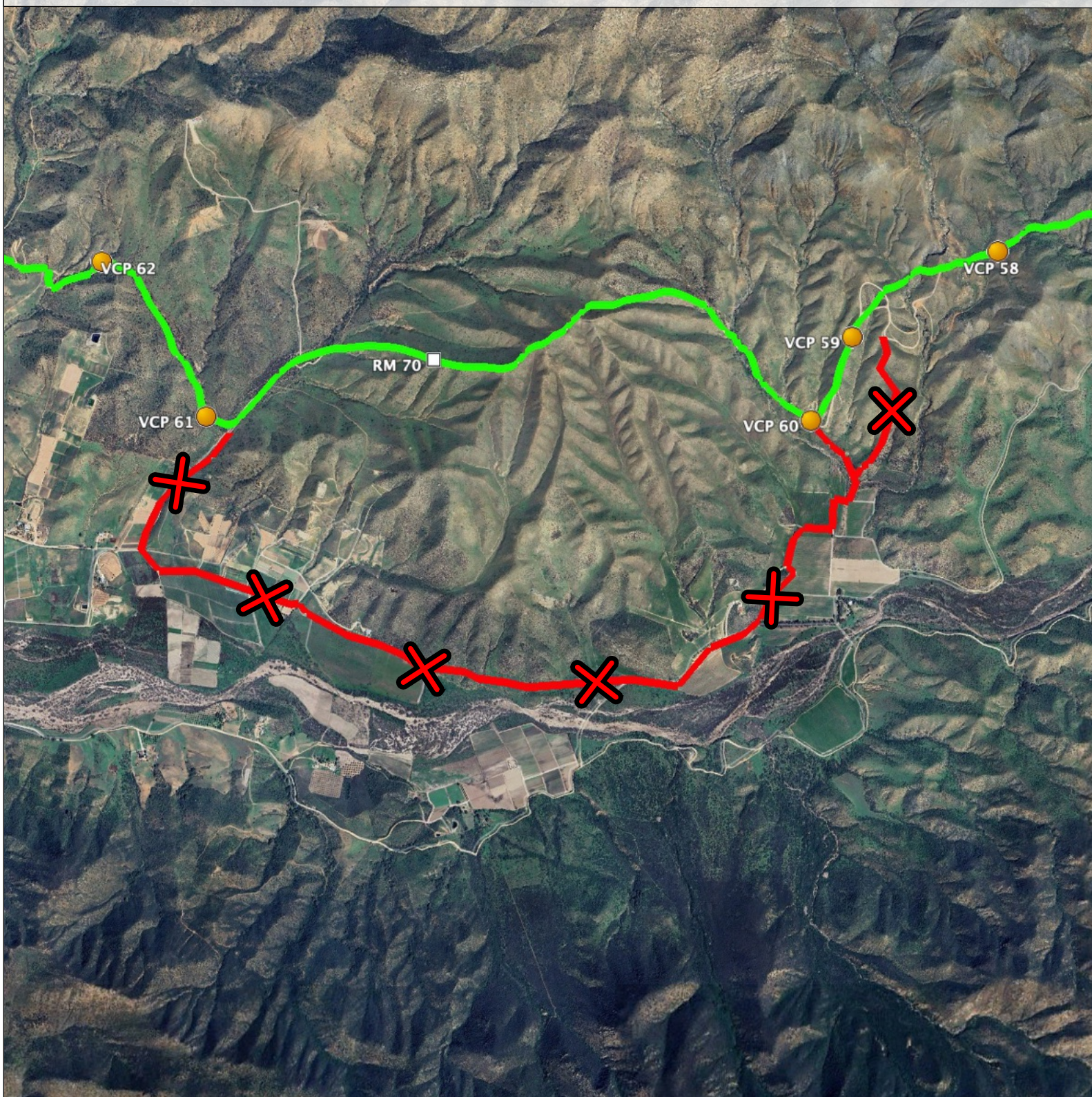


# FORBIDDEN LINES

## LINE 04

10.30.2025

- For **ALL CATEGORIES / CLASSES**.
- Race Course in **GREEN**.
- Forbidden trails in **RED**.
- Penalty: from 4 hours to disqualification.
- Reference: RM 70. East Uruapan.



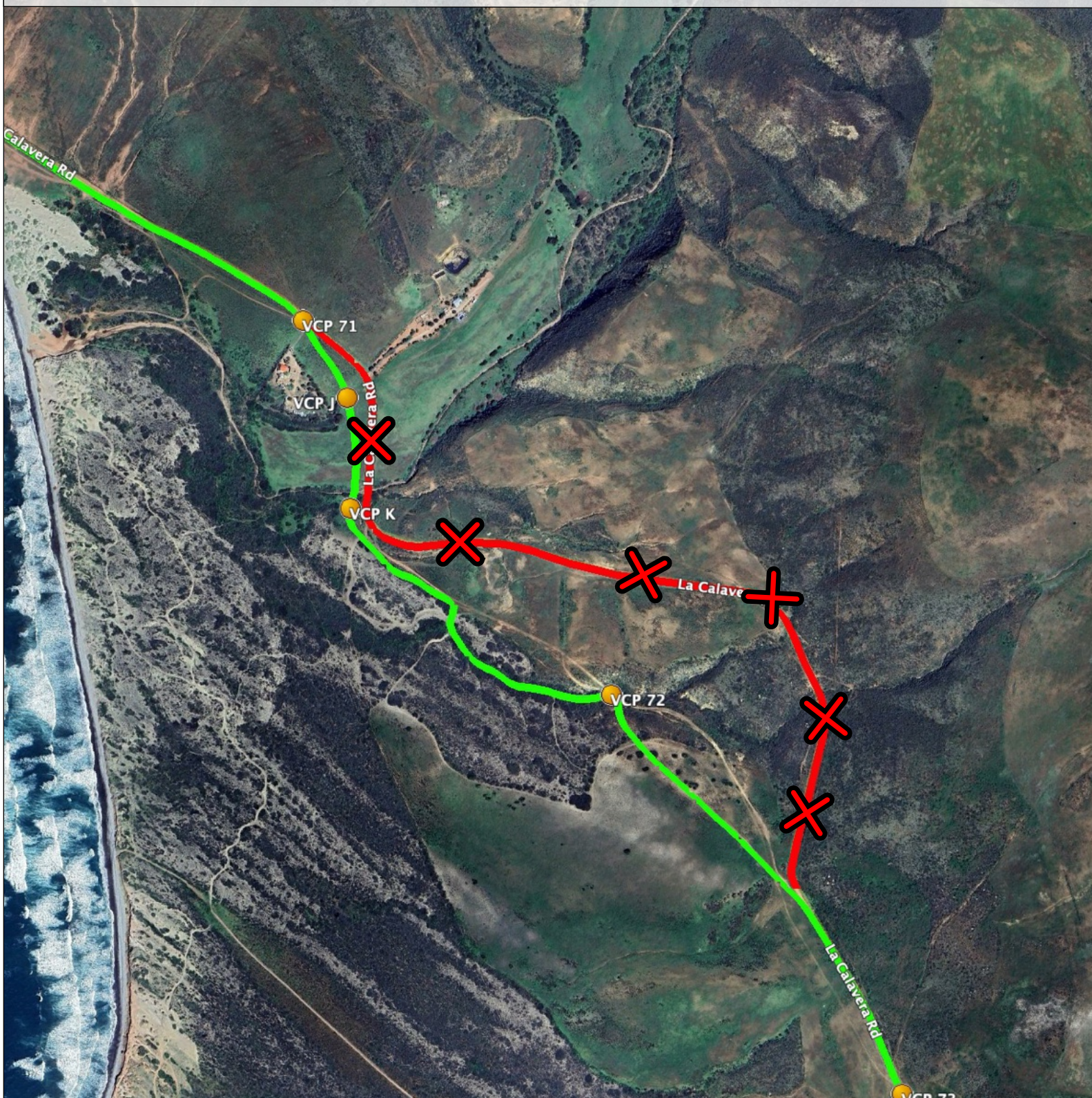


# FORBIDDEN LINES

## LINE 05

10.30.2025

- For **ALL CATEGORIES / CLASSES**.
- Race Course in **GREEN**.
- Forbidden trails in **RED**.
- Penalty: from 4 hours to disqualification.
- Reference: RM 106. North Punta Cabras.





# FORBIDDEN LINES

## LINE 06

10.30.2025

- For **ALL CATEGORIES / CLASSES**.
- Race Course in **GREEN**.
- Forbidden trails in **RED**.
- Penalty: from 4 hours to disqualification.
- Reference: RM 112. North Erendira.



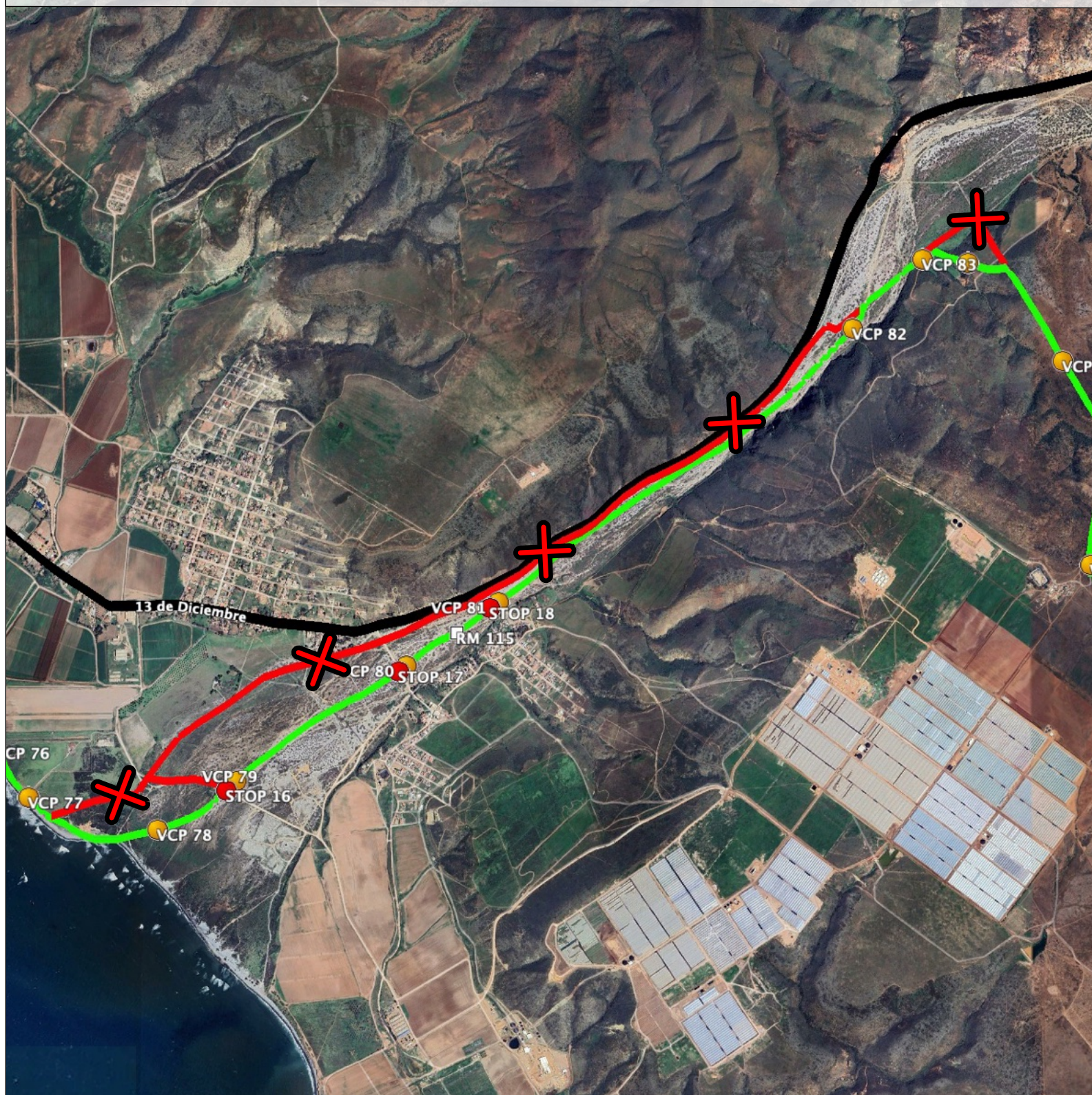


# FORBIDDEN LINES

## LINE 07

10.30.2025

- For **ALL CATEGORIES / CLASSES**.
- Race Course in **GREEN**.
- Forbidden trails in **RED**.
- Penalty: from 4 hours to disqualification.
- Reference: RM 115. San Vicente Wash at Erendira.



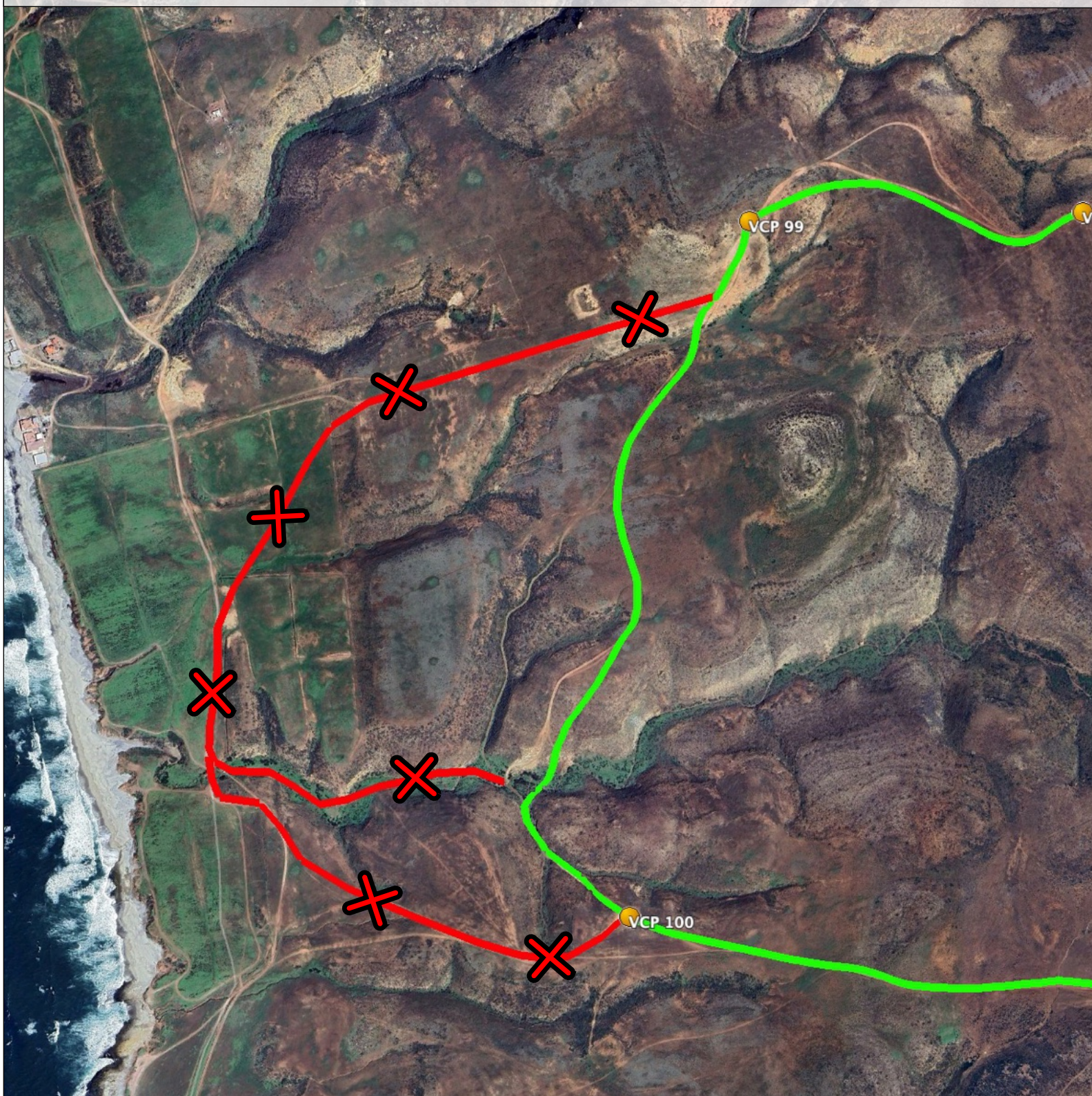


# FORBIDDEN LINES

## LINE 08

10.30.2025

- For **ALL CATEGORIES / CLASSES**.
- Race Course in **GREEN**.
- Forbidden trails in **RED**.
- Penalty: from 4 hours to disqualification.
- Reference: RM 122. Malibu Beach, South of Erendira.





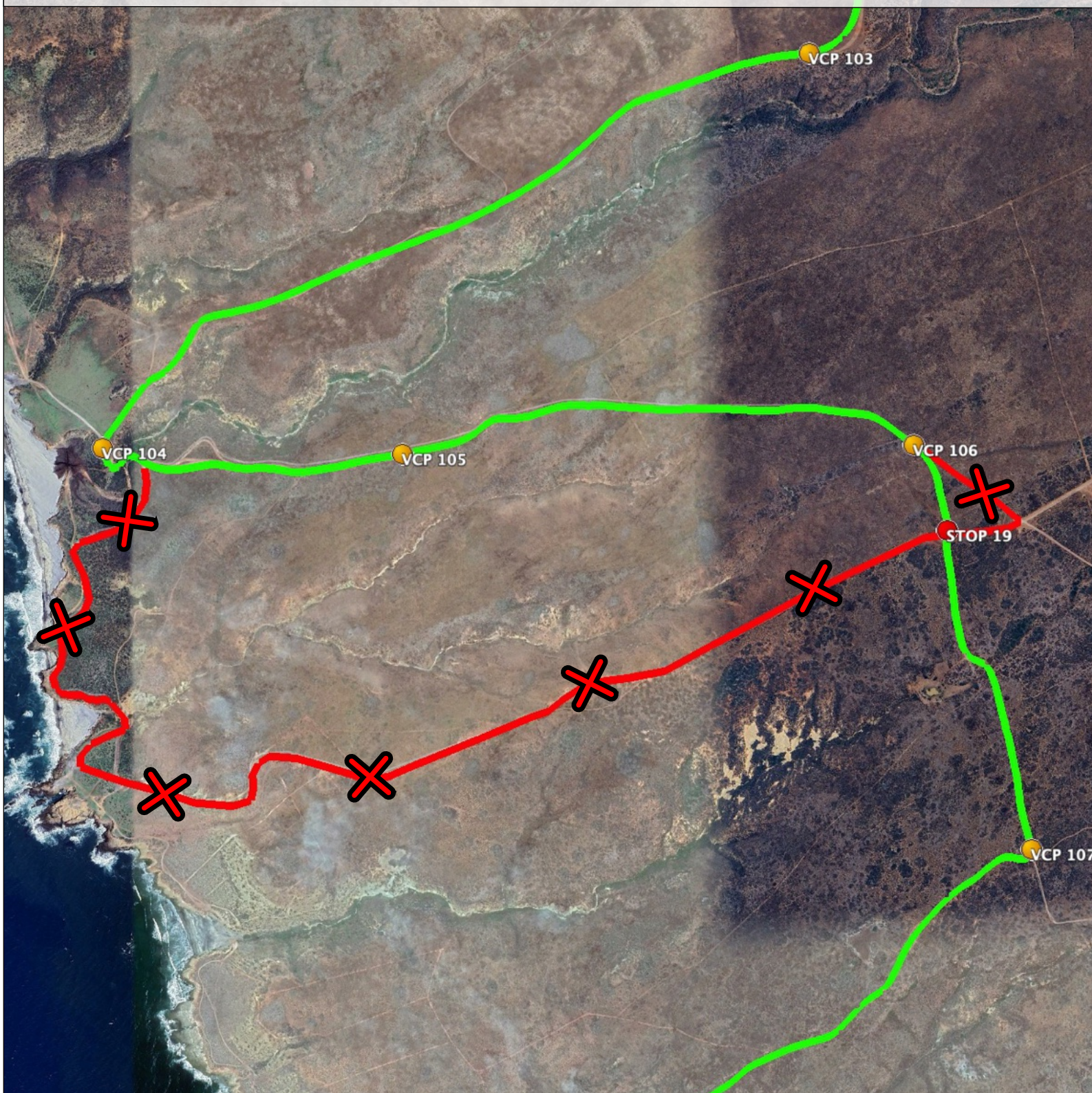
# FORBIDDEN LINES

## LINE 09

VCP 102

10.30.2025

- For **ALL CATEGORIES / CLASSES**.
- Race Course in **GREEN**.
- Forbidden trails in **RED**.
- Penalty: from 4 hours to disqualification.
- Reference: RM 127. La Lobera, South of Erendira.





# FORBIDDEN LINES

## LINE 10

10.30.2025

- For **ALL CATEGORIES / CLASSES**.
- Race Course in **GREEN**.
- Forbidden trails in **RED**.
- Penalty: from 4 hours to disqualification.
- Reference: RM 136. R. Johnson.

