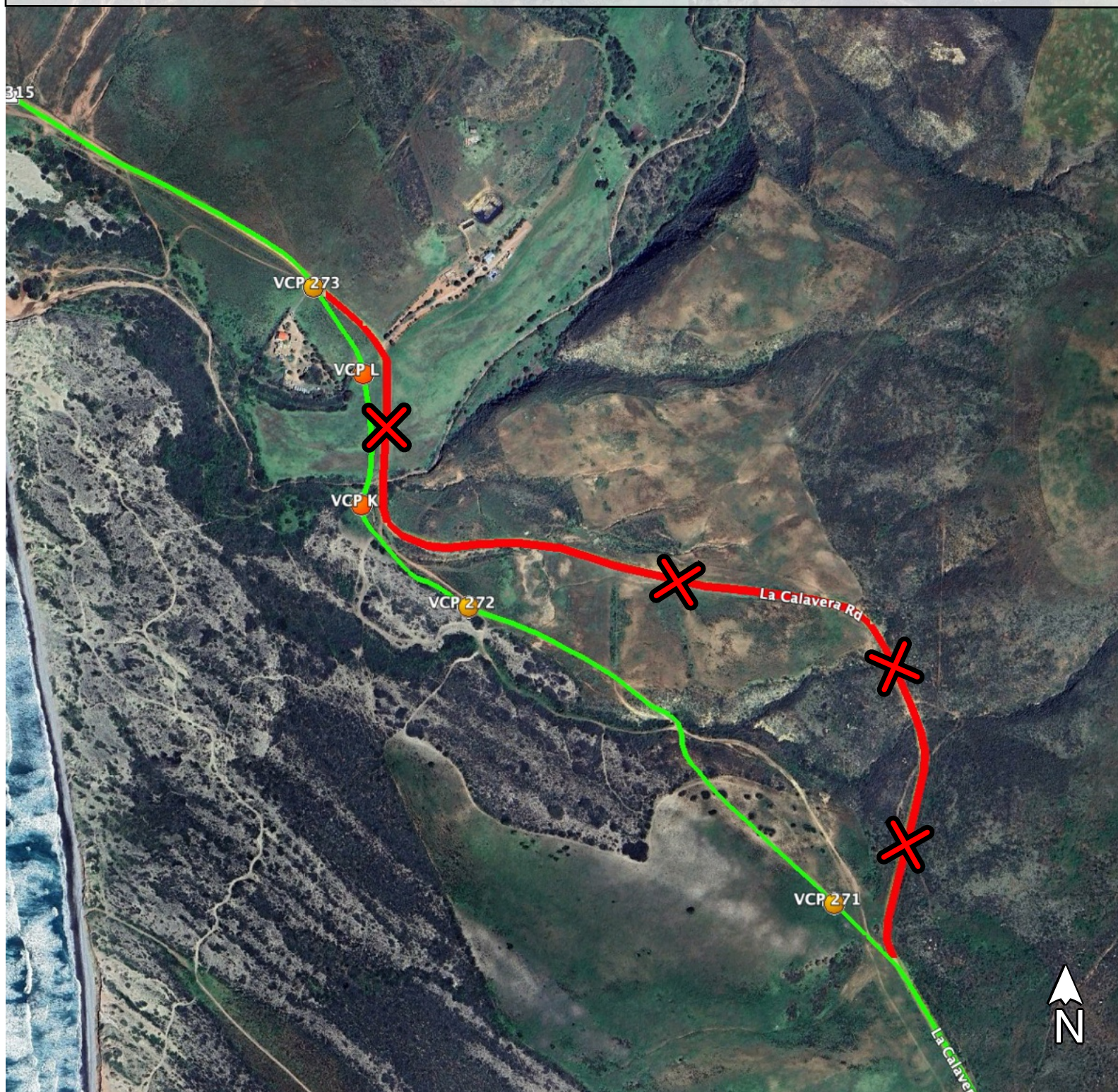


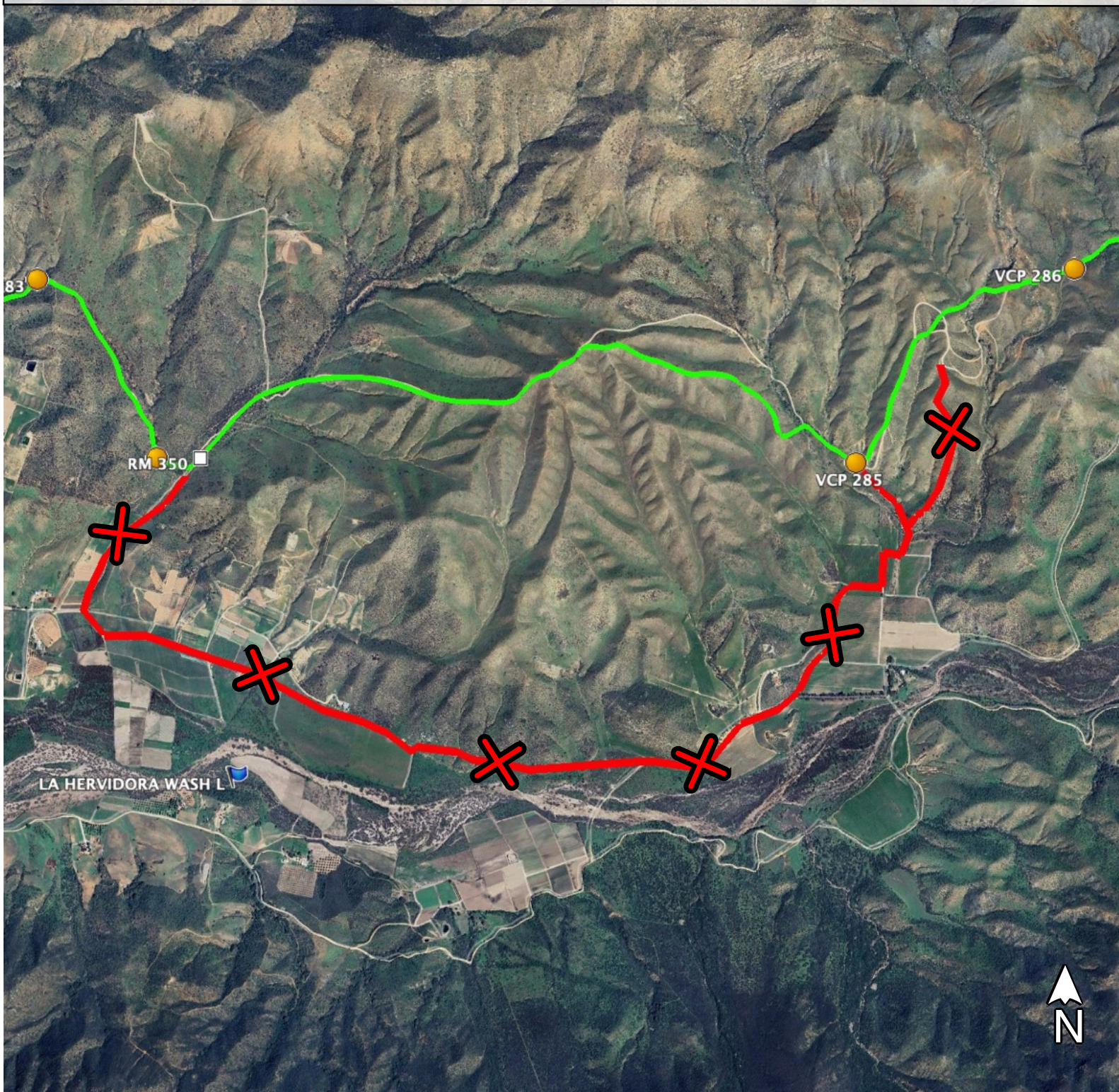
LINE 31

- For **ALL CATEGORIES / CLASSES**.
- Race Course in **GREEN**.
- Forbidden trails in **RED**.
- Penalty: from 4 hours to disqualification.
- Reference: Punta Cabras.



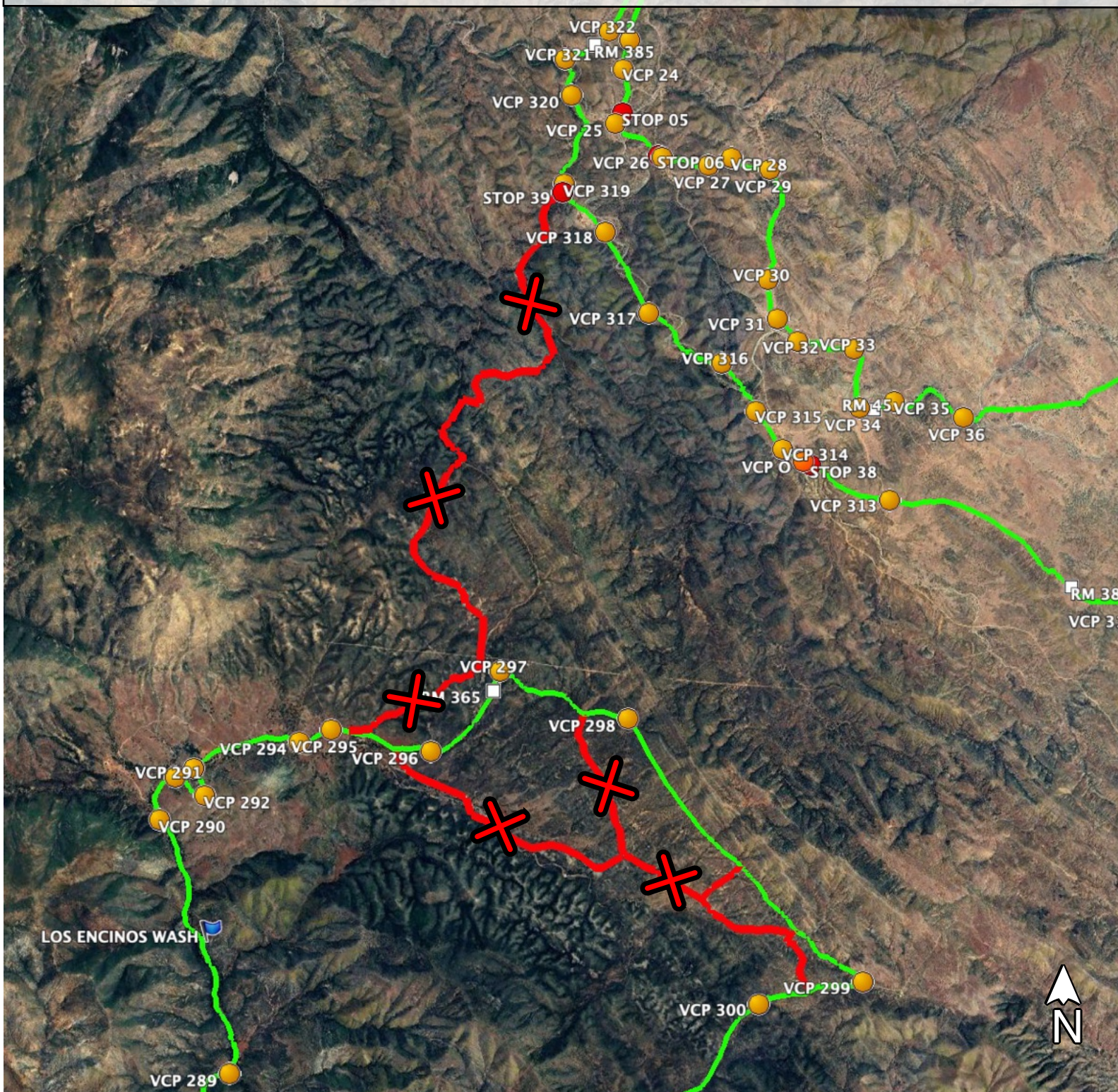
LINE 32

- For **ALL CATEGORIES / CLASSES**.
- Race Course in **GREEN**.
- Forbidden trails in **RED**.
- Penalty: from 4 hours to disqualification.
- Reference: Uruapan.



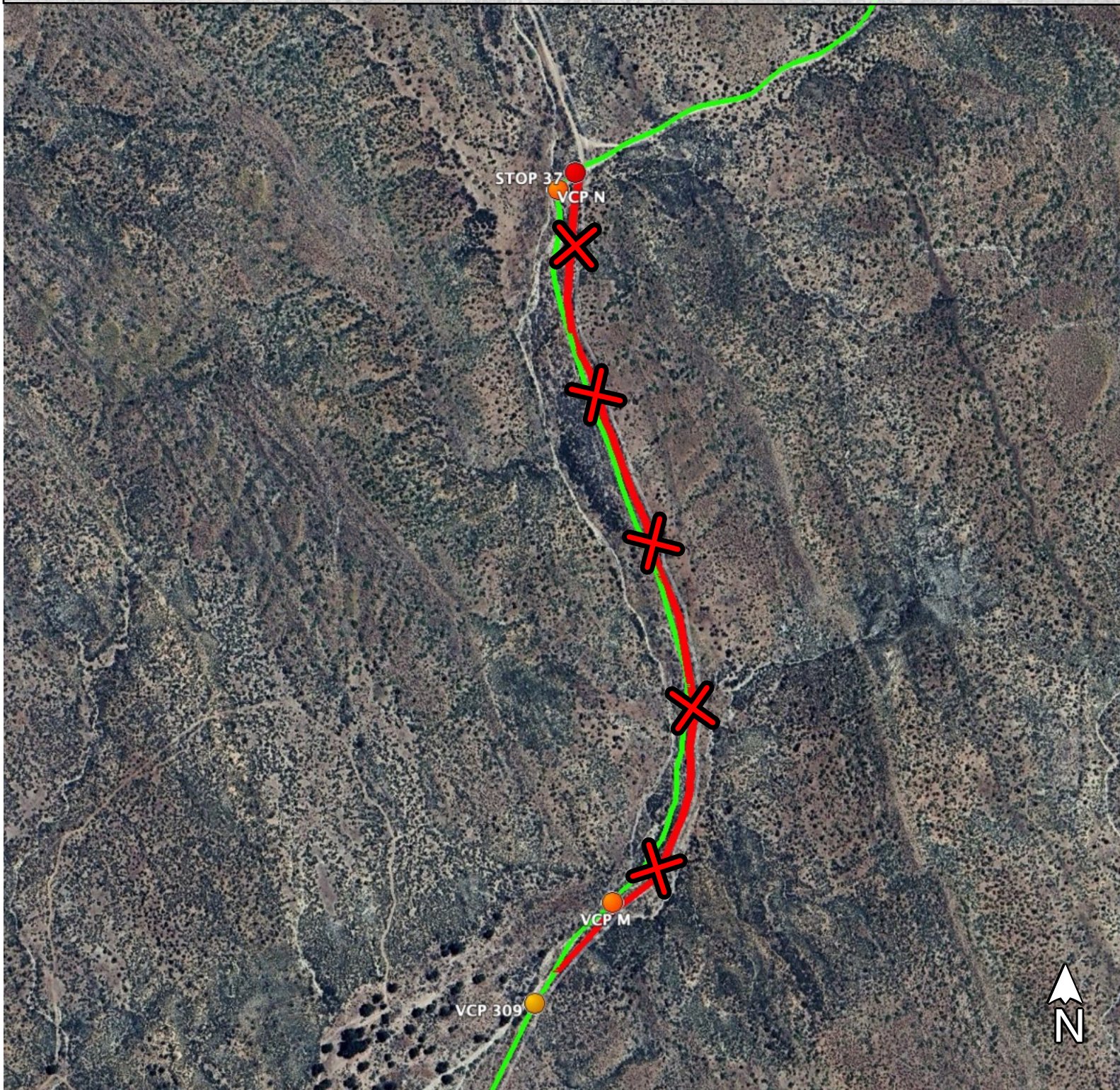
LINE 33

- For **ALL CATEGORIES / CLASSES**.
- Race Course in **GREEN**.
- Forbidden trails in **RED**.
- Penalty: from 4 hours to disqualification.
- Reference: Rancho Los Encinos.



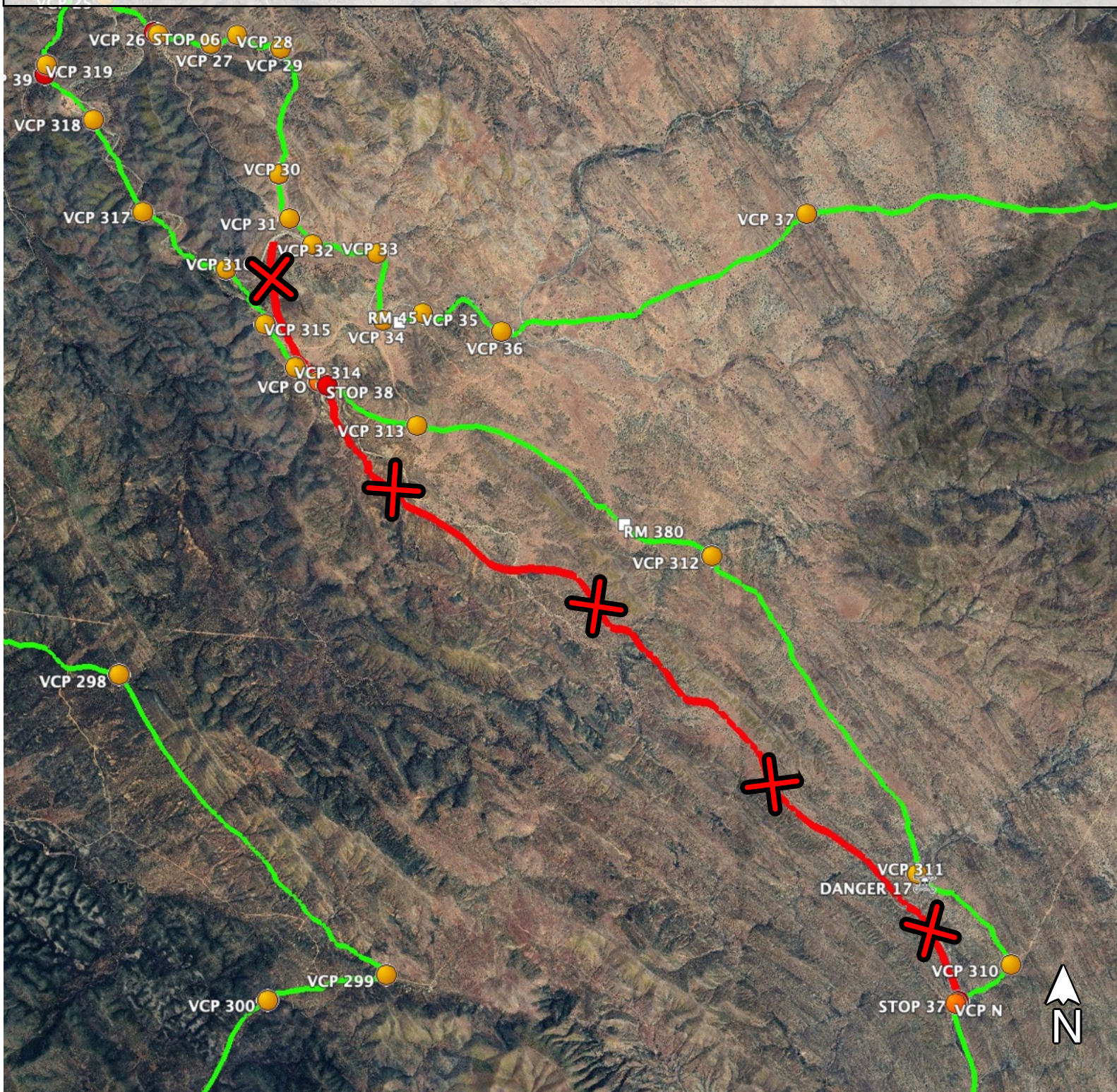
LINE 34

- For **ALL CATEGORIES / CLASSES**.
- Race Course in **GREEN**.
- Forbidden trails in **RED**.
- Penalty: from 4 hours to disqualification.
- Reference: Rancho 3 Hermanos.



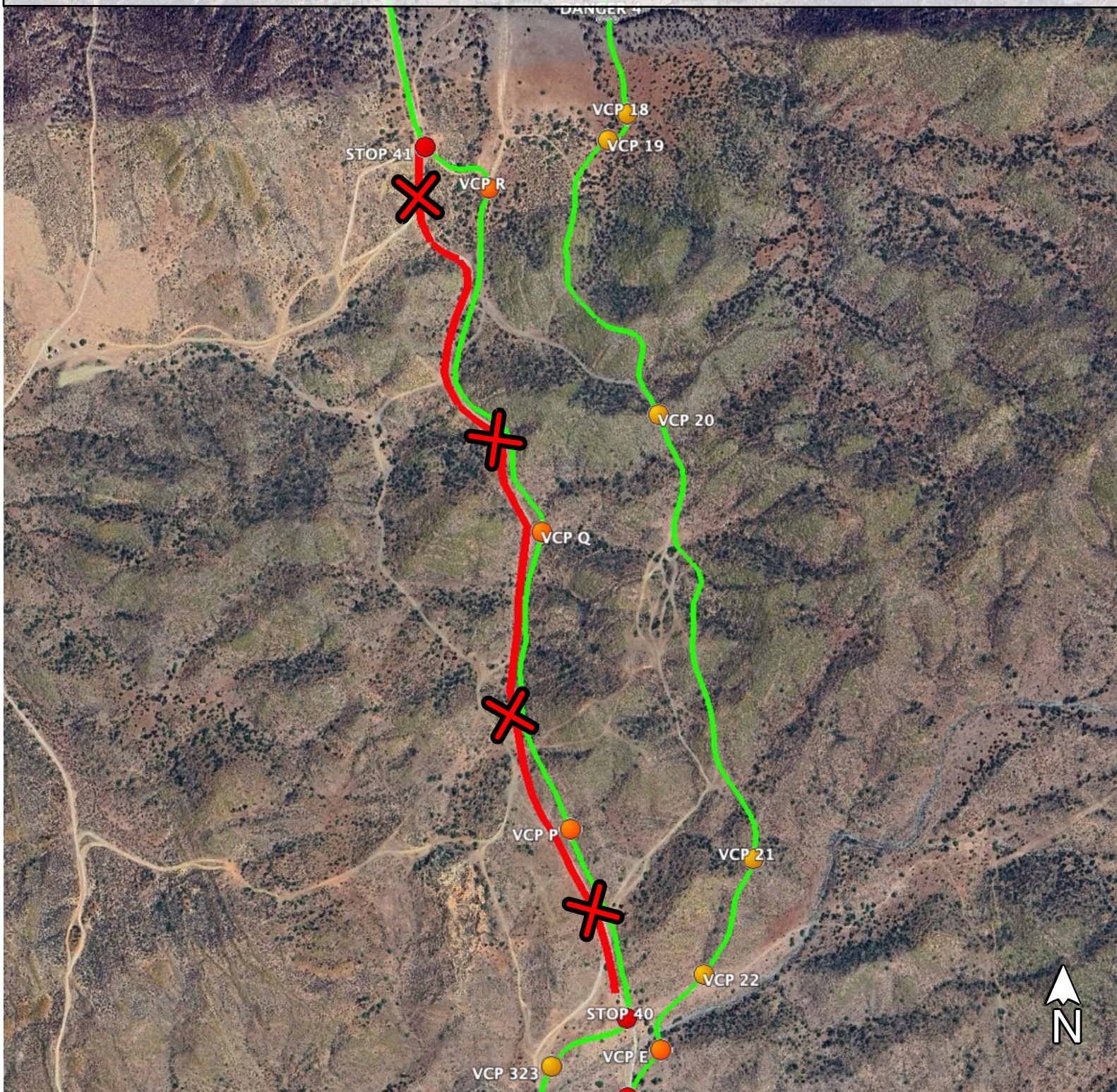
LINE 35

- For **ALL CATEGORIES / CLASSES**.
- Race Course in **GREEN**.
- Forbidden trails in **RED**.
- Penalty: from 4 hours to disqualification.
- Reference: Rancho 3 Hermanos - Ojos Negros Road.



LINE 36

- For **ALL CATEGORIES / CLASSES**.
- Race Course in **GREEN**.
- Forbidden trails in **RED**.
- Penalty: from 4 hours to disqualification.
- Reference: C. El Montes.



LINE 37

- For **ALL CATEGORIES / CLASSES**.
- Race Course in **GREEN**.
- Forbidden trails in **RED**.
- Penalty: from 4 hours to disqualification.
- Reference: San Salvador Wash.

END OF PRE-RUN

VCP 325

VCP 17

VCP 324

SAN SALVADOR WASH

RM 40

DANGER 4

VCP 18

VCP 19

STOP 41

VCP R



LINE 38

- For **ALL CATEGORIES / CLASSES**.
- Race Course in **GREEN**.
- Forbidden trails in **RED**.
- Penalty: from 4 hours to disqualification.
- Reference: C. Pedregosos.

