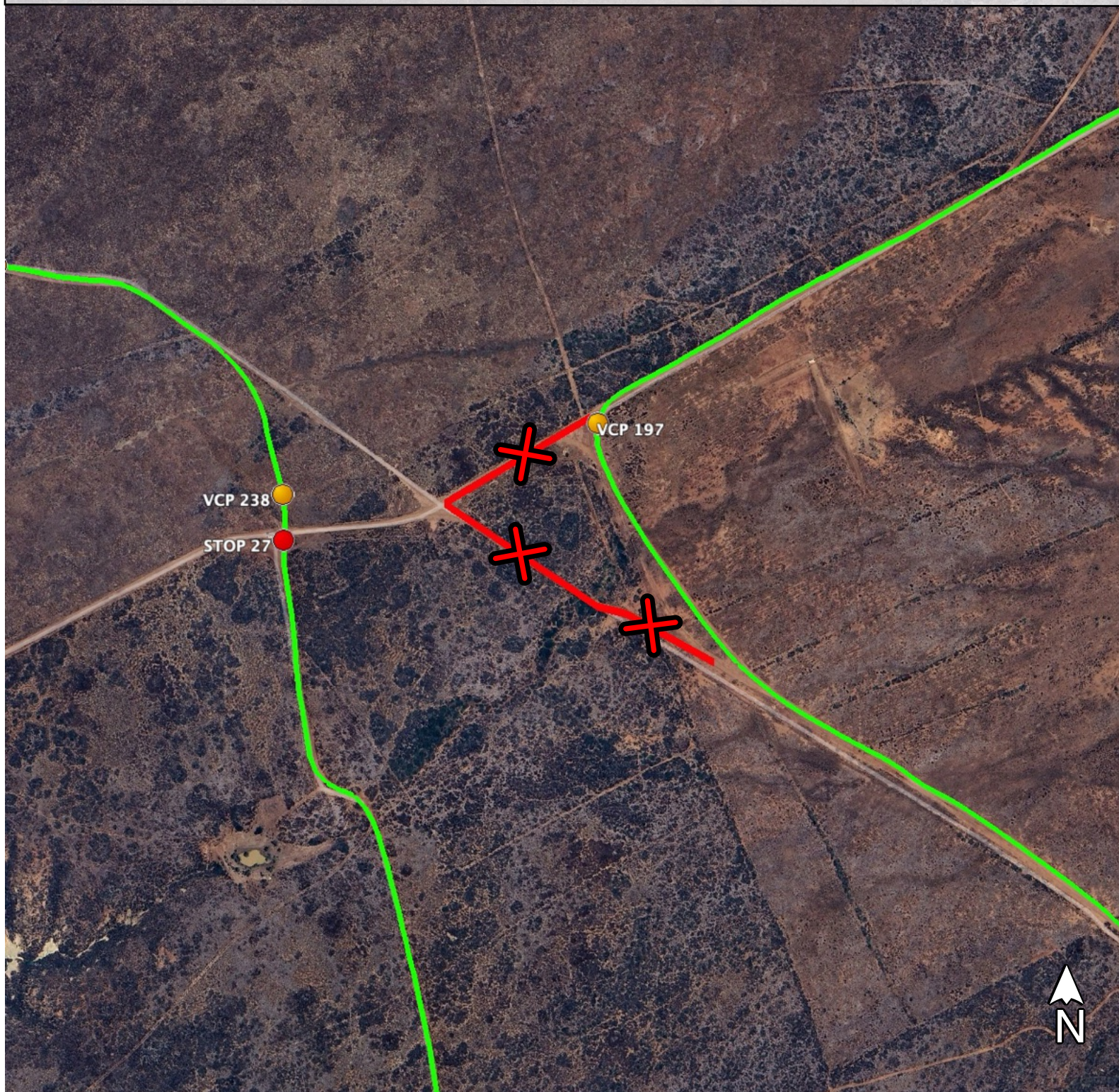


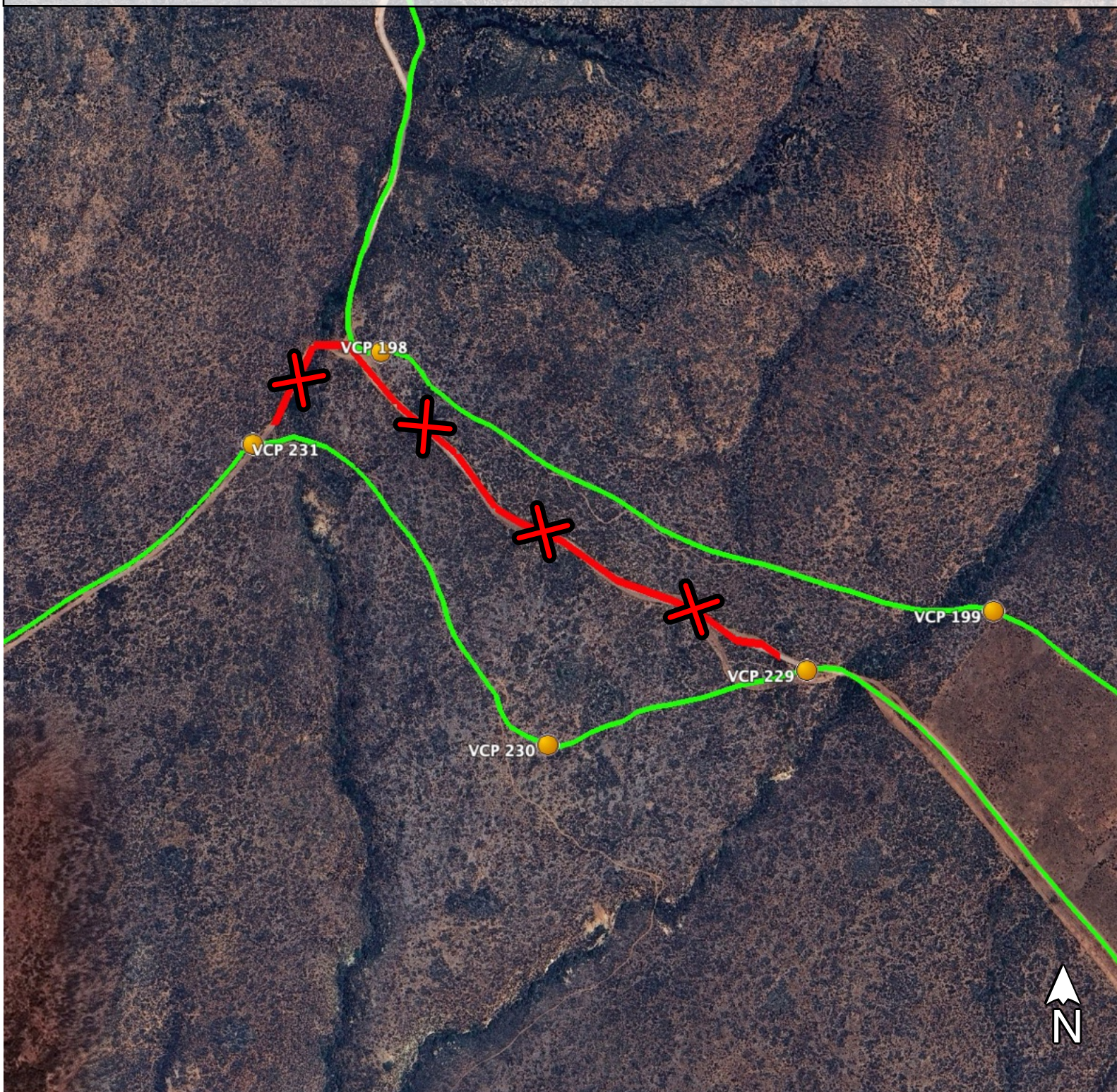
LINE 21

- For **ALL CATEGORIES / CLASSES**.
- Race Course in **GREEN**.
- Forbidden trails in **RED**.
- Penalty: from 4 hours to disqualification.
- Reference: Lopez Rayon - La Lobera Road.



LINE 22

- For **ALL CATEGORIES / CLASSES**.
- Race Course in **GREEN**.
- Forbidden trails in **RED**.
- Penalty: from 4 hours to disqualification.
- Reference: Cerro Solo.

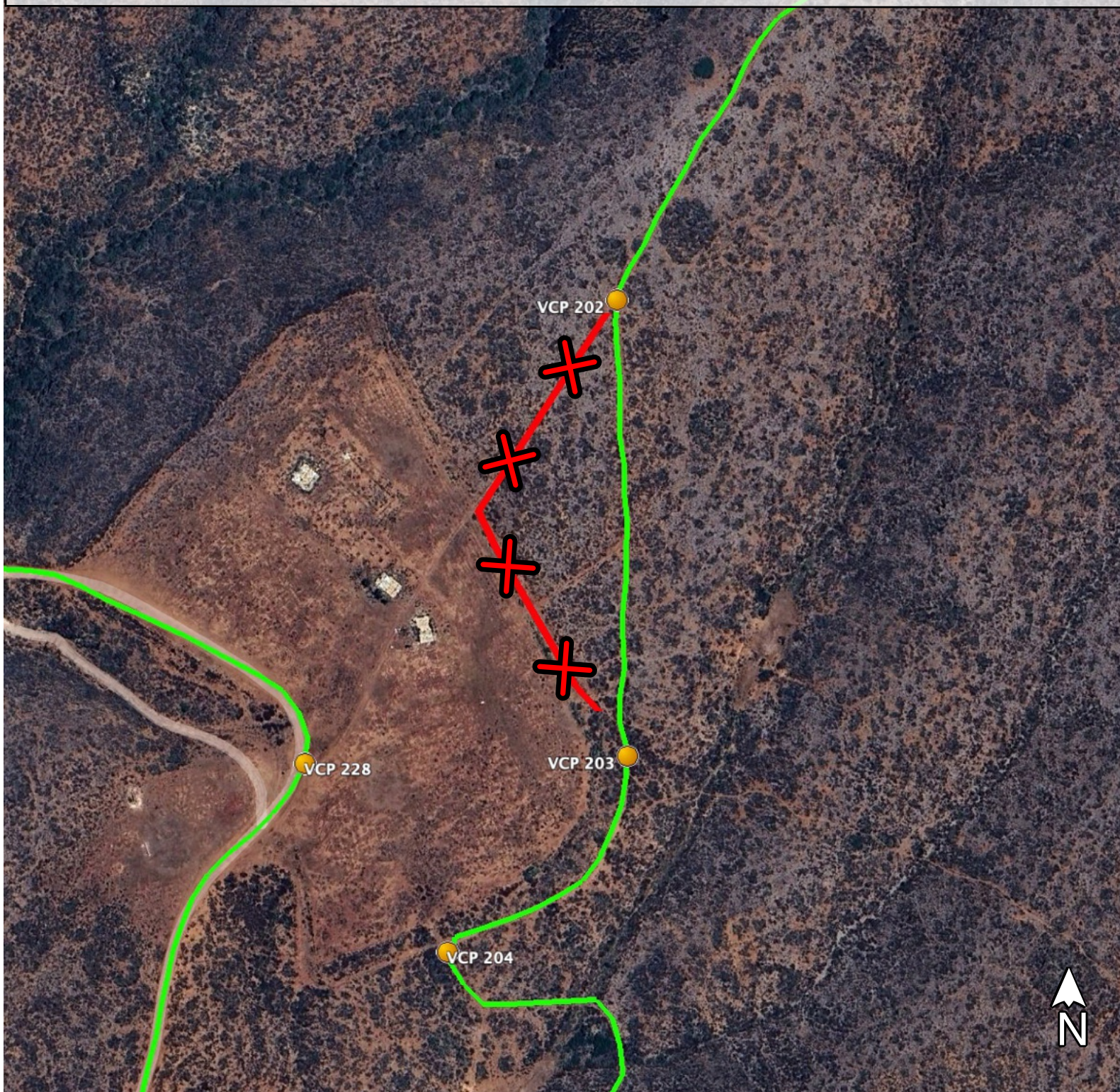


FORBIDDEN LINES

LINE 23

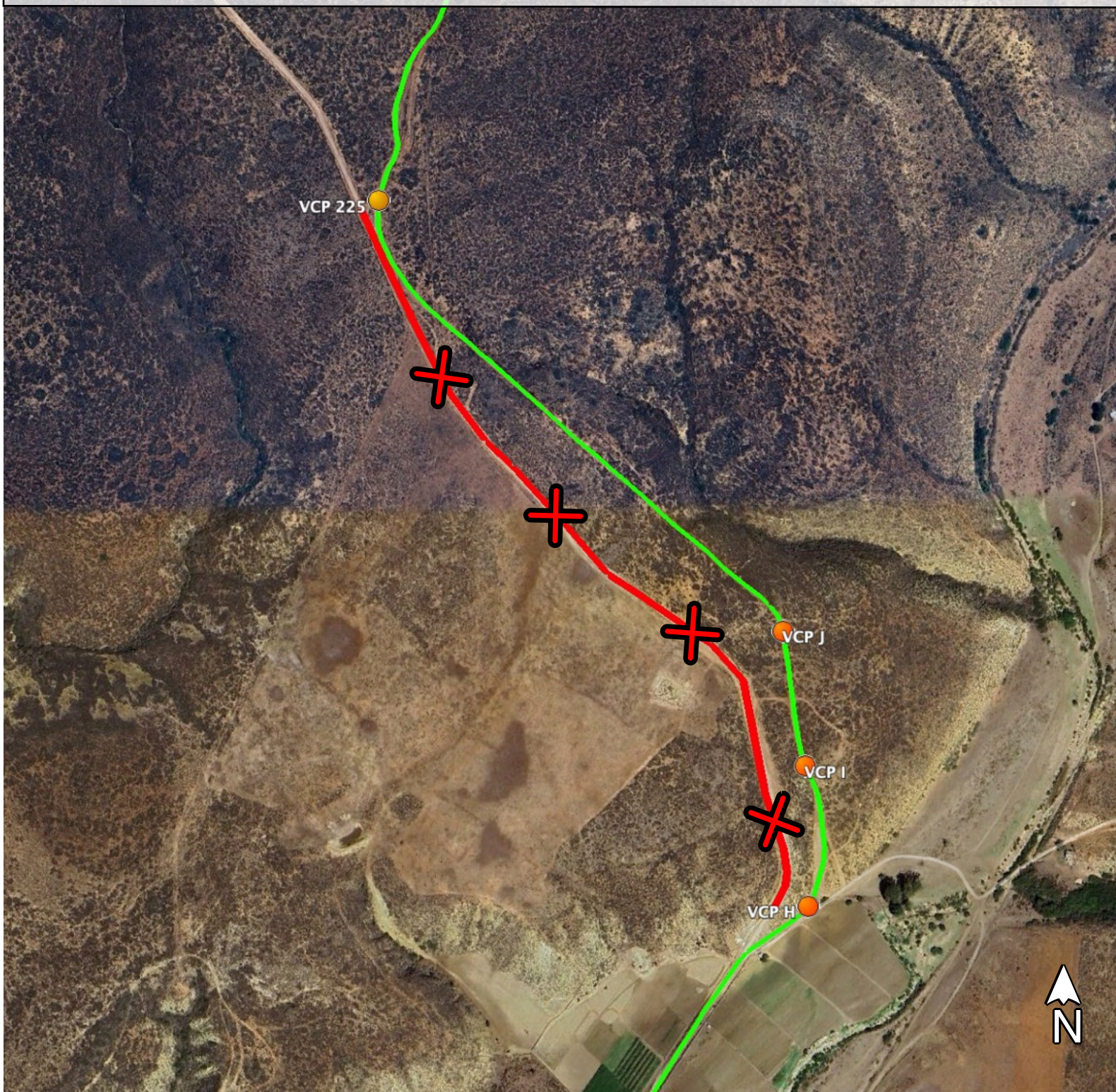
09.09.2025

- For **ALL CATEGORIES / CLASSES**.
- Race Course in **GREEN**.
- Forbidden trails in **RED**.
- Penalty: from 4 hours to disqualification.
- Reference: Rancho La Concha.



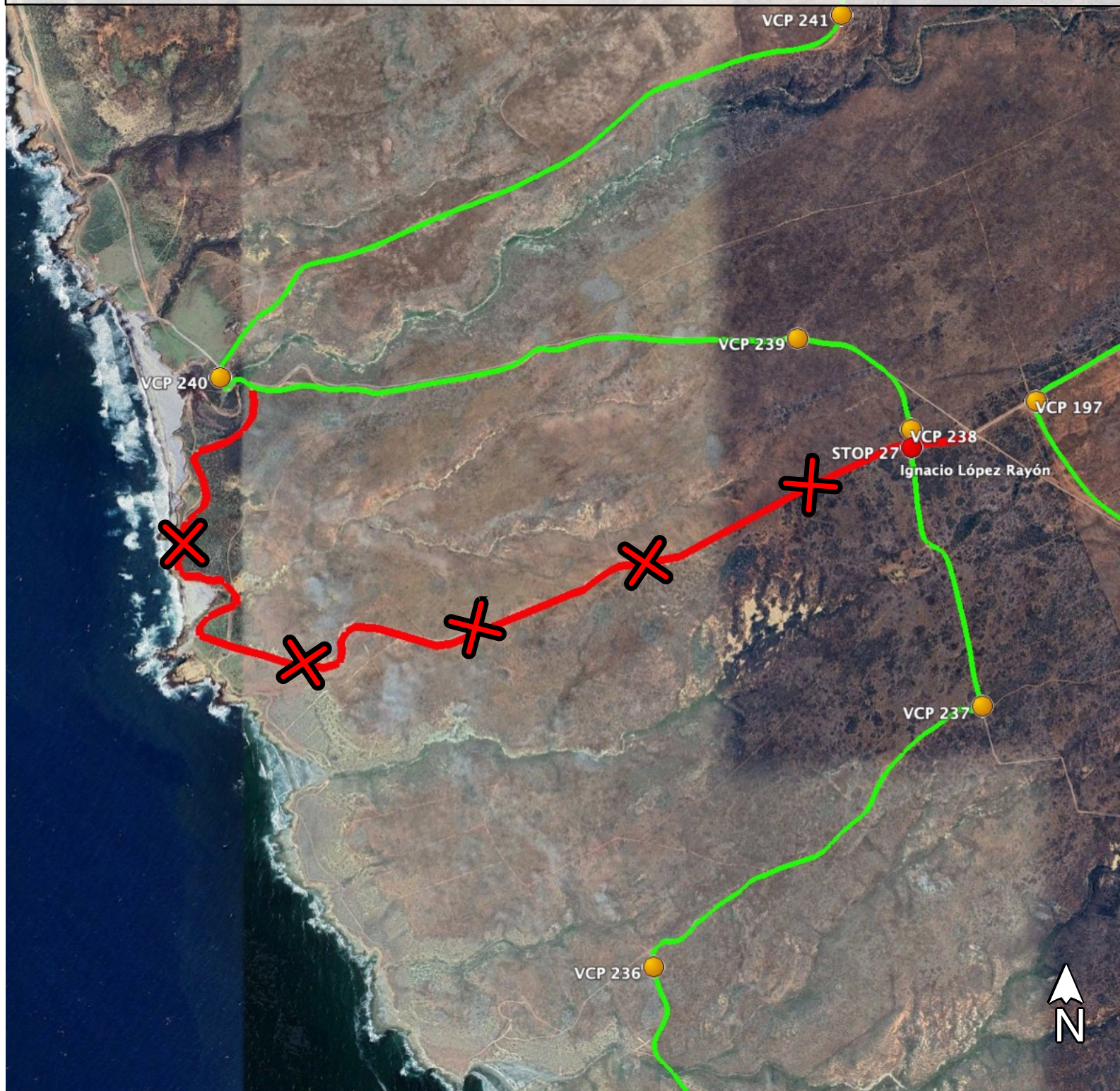
LINE 24

- For **ALL CATEGORIES / CLASSES**.
- Race Course in **GREEN**.
- Forbidden trails in **RED**.
- Penalty: from 4 hours to disqualification.
- Reference: North Rancho Johnson.

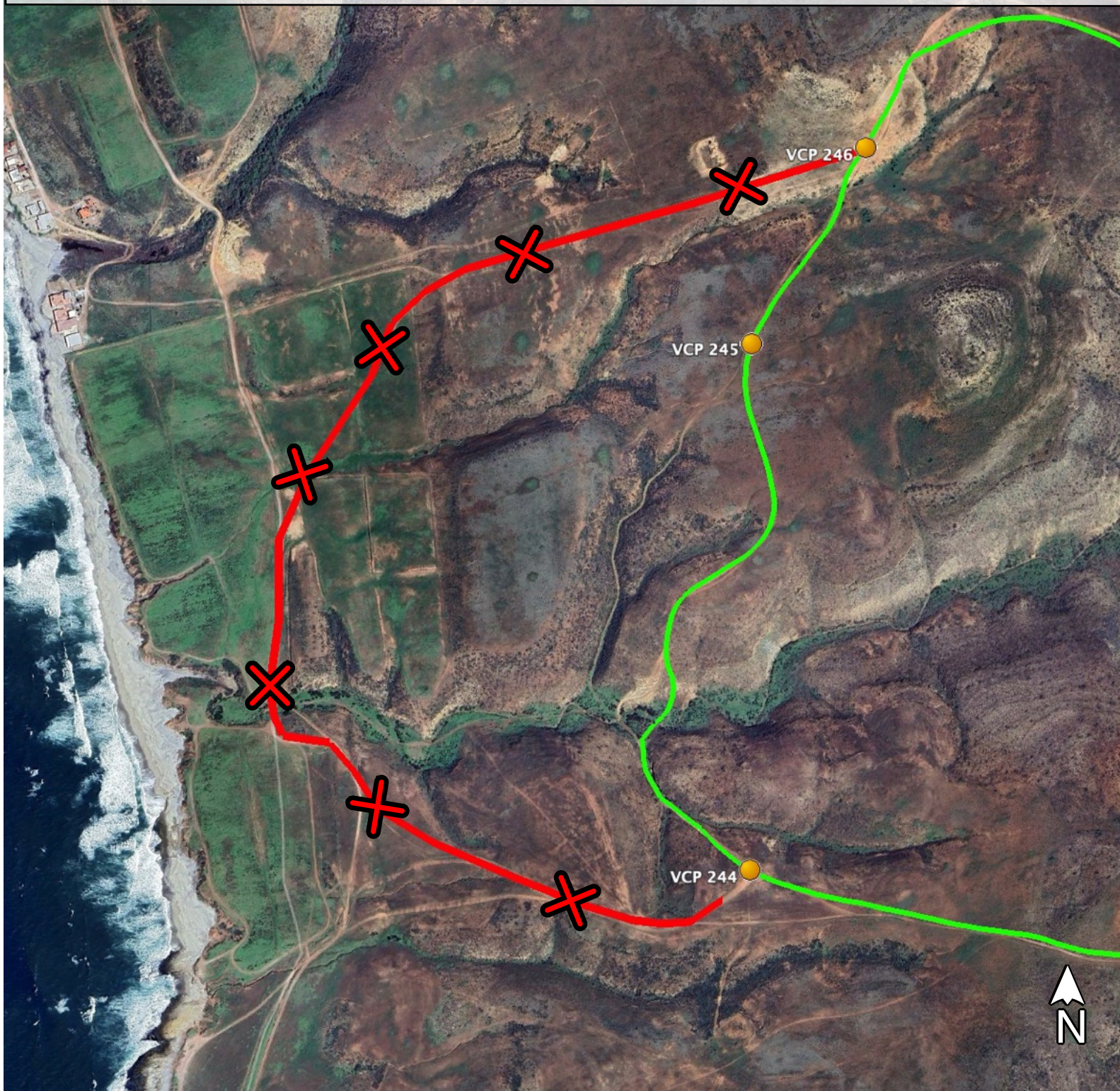


LINE 25

- For **ALL CATEGORIES / CLASSES**.
- Race Course in **GREEN**.
- Forbidden trails in **RED**.
- Penalty: from 4 hours to disqualification.
- Reference: La Lobera.

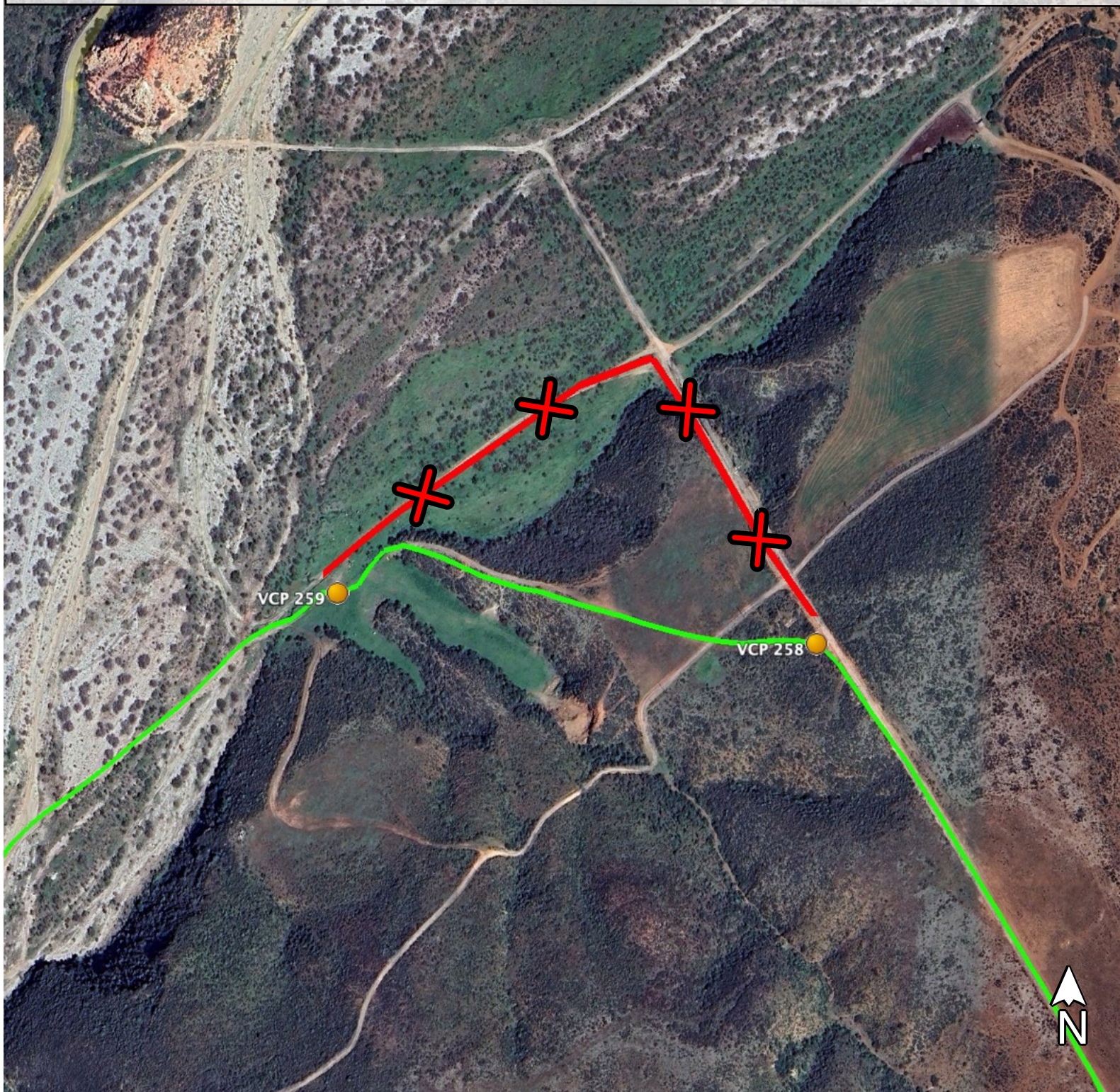


- For **ALL CATEGORIES / CLASSES**.
- Race Course in **GREEN**.
- Forbidden trails in **RED**.
- Penalty: from 4 hours to disqualification.
- Reference: R. Dos Amigos.



LINE 27

- For **ALL CATEGORIES / CLASSES**.
- Race Course in **GREEN**.
- Forbidden trails in **RED**.
- Penalty: from 4 hours to disqualification.
- Reference: Cañon San Vicente.



LINE 28

- For **ALL CATEGORIES / CLASSES**.
- Race Course in **GREEN**.
- Forbidden trails in **RED**.
- Penalty: from 4 hours to disqualification.
- Reference: San Vicente Wash at Ej. Eréndira.



LINE 29

- For **ALL CATEGORIES / CLASSES**.
- Race Course in **GREEN**.
- Forbidden trails in **RED**.
- Penalty: from 4 hours to disqualification.
- Reference: Ej. Eréndira.



LINE 30

- For **ALL CATEGORIES / CLASSES**.
- Race Course in **GREEN**.
- Forbidden trails in **RED**.
- Penalty: from 4 hours to disqualification.
- Reference: Piedra Blanca.

