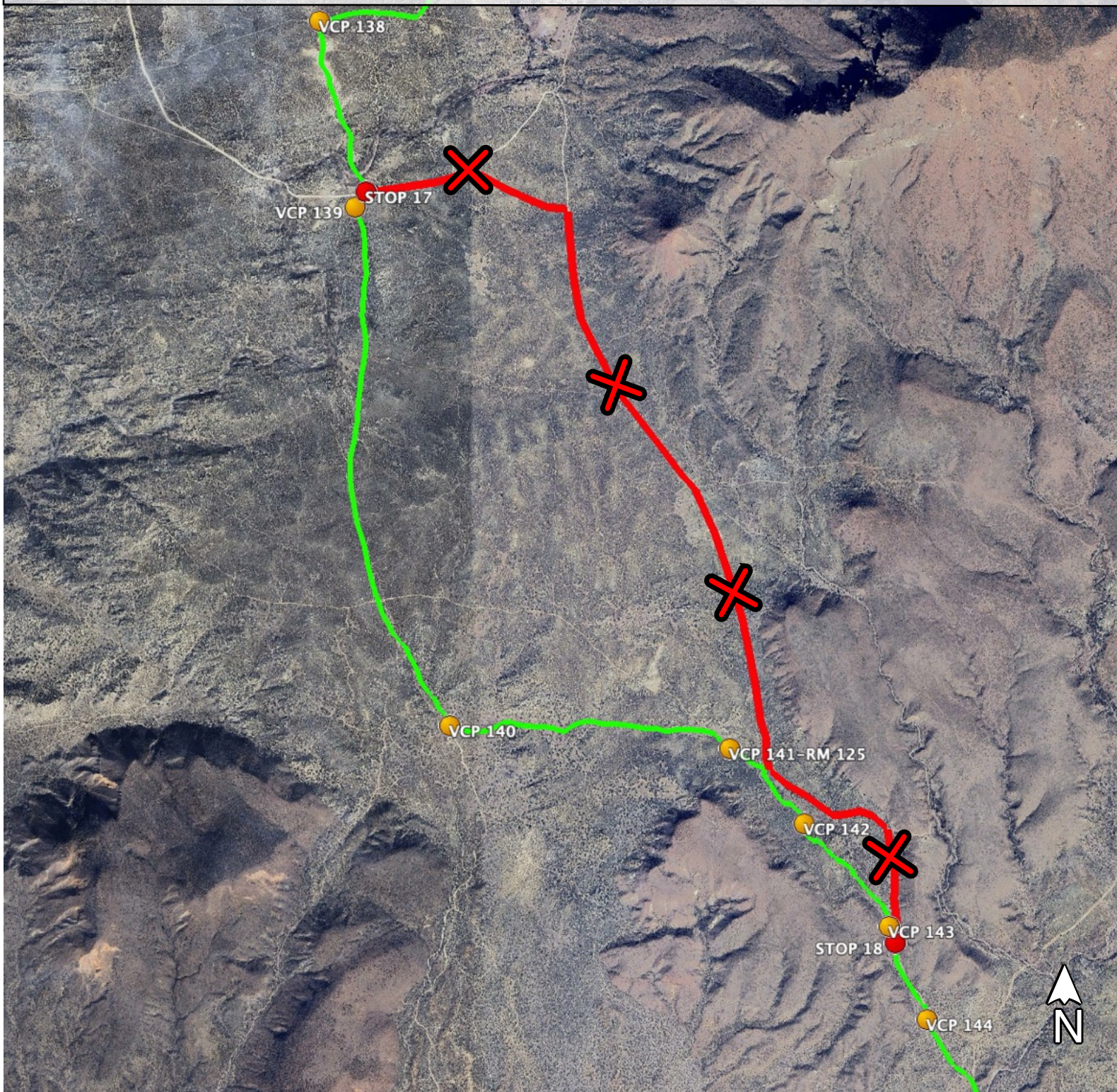
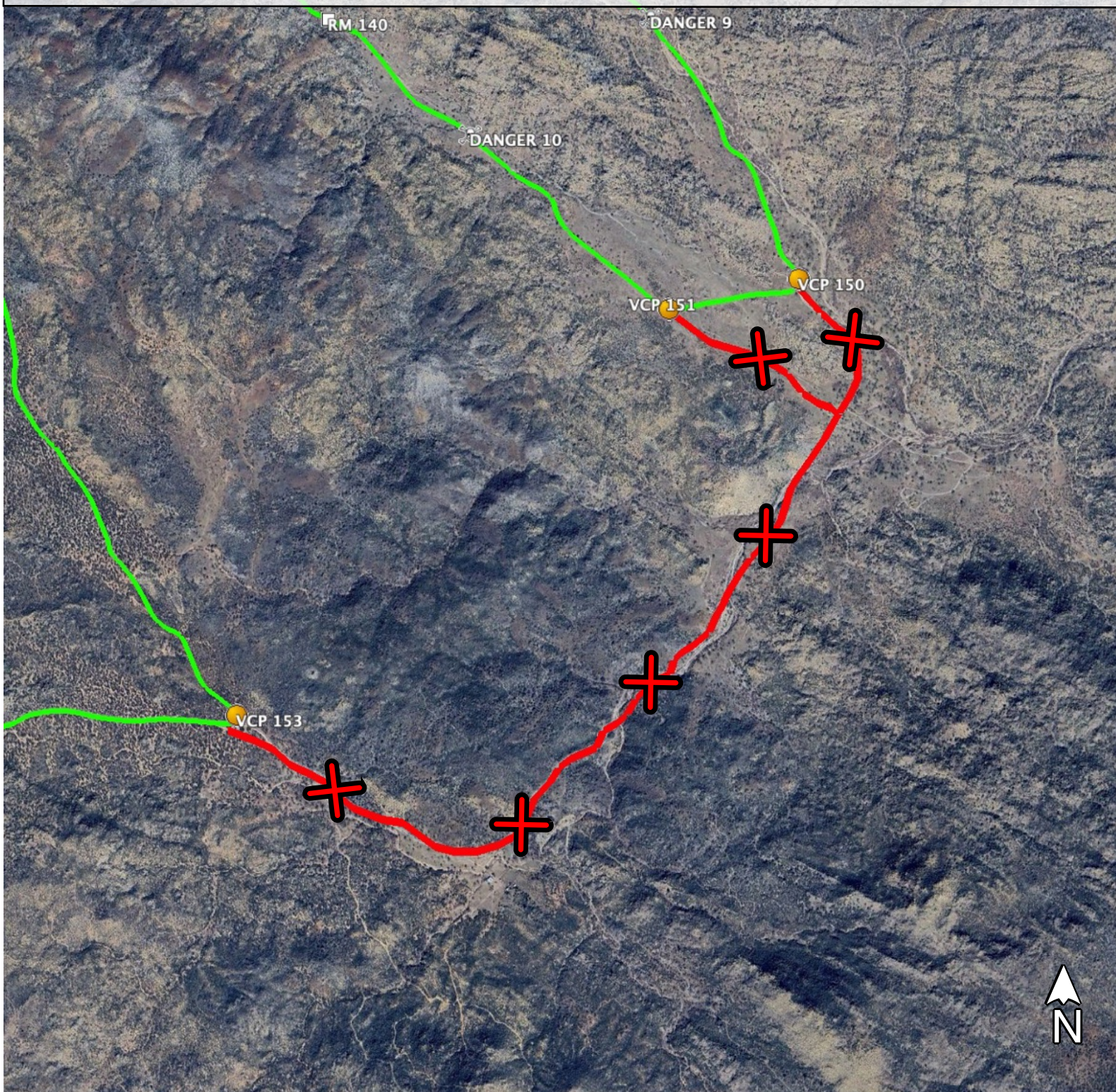


- For **ALL CATEGORIES / CLASSES**.
- Race Course in **GREEN**.
- Forbidden trails in **RED**.
- Penalty: from 4 hours to disqualification.
- Reference: South Santa Catarina.



LINE 12

- For **ALL CATEGORIES / CLASSES**.
- Race Course in **GREEN**.
- Forbidden trails in **RED**.
- Penalty: from 4 hours to disqualification.
- Reference: Rancho Las Minitas.

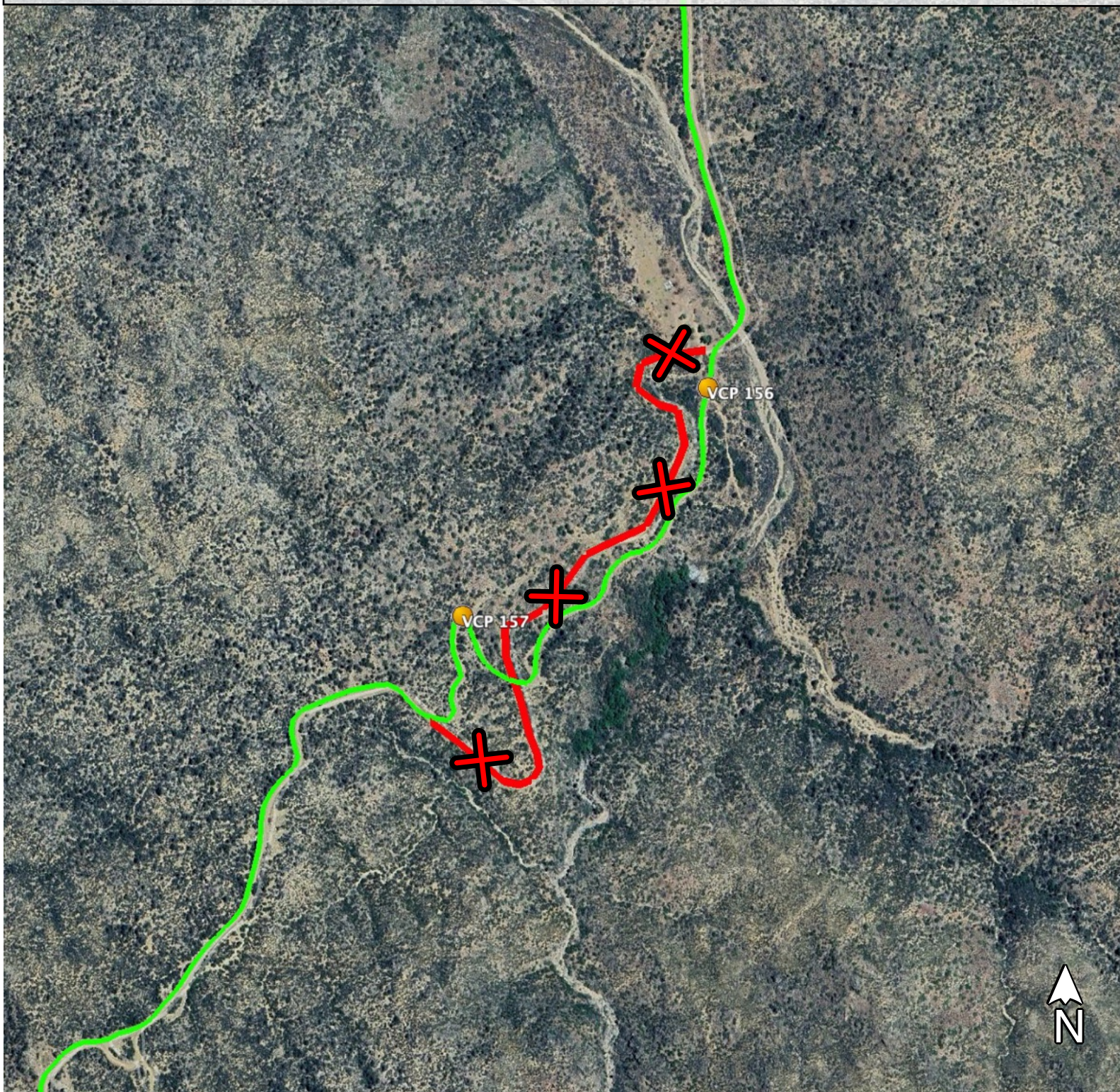


FORBIDDEN LINES

LINE 13

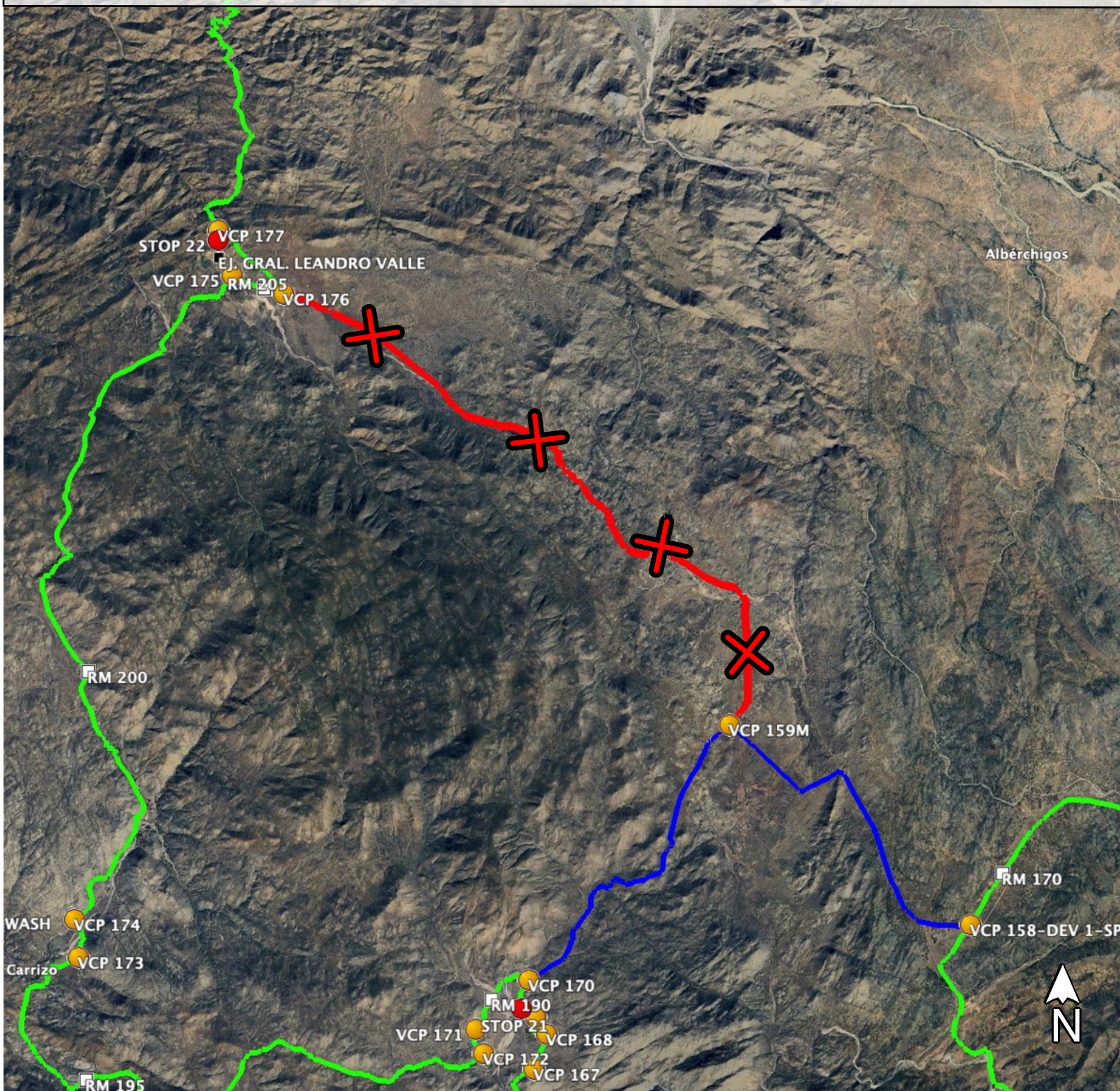
09.09.2025

- For **ALL CATEGORIES / CLASSES**.
- Race Course in **GREEN**.
- Forbidden trails in **RED**.
- Penalty: from 4 hours to disqualification.
- Reference: Mike Sky Ranch Road.



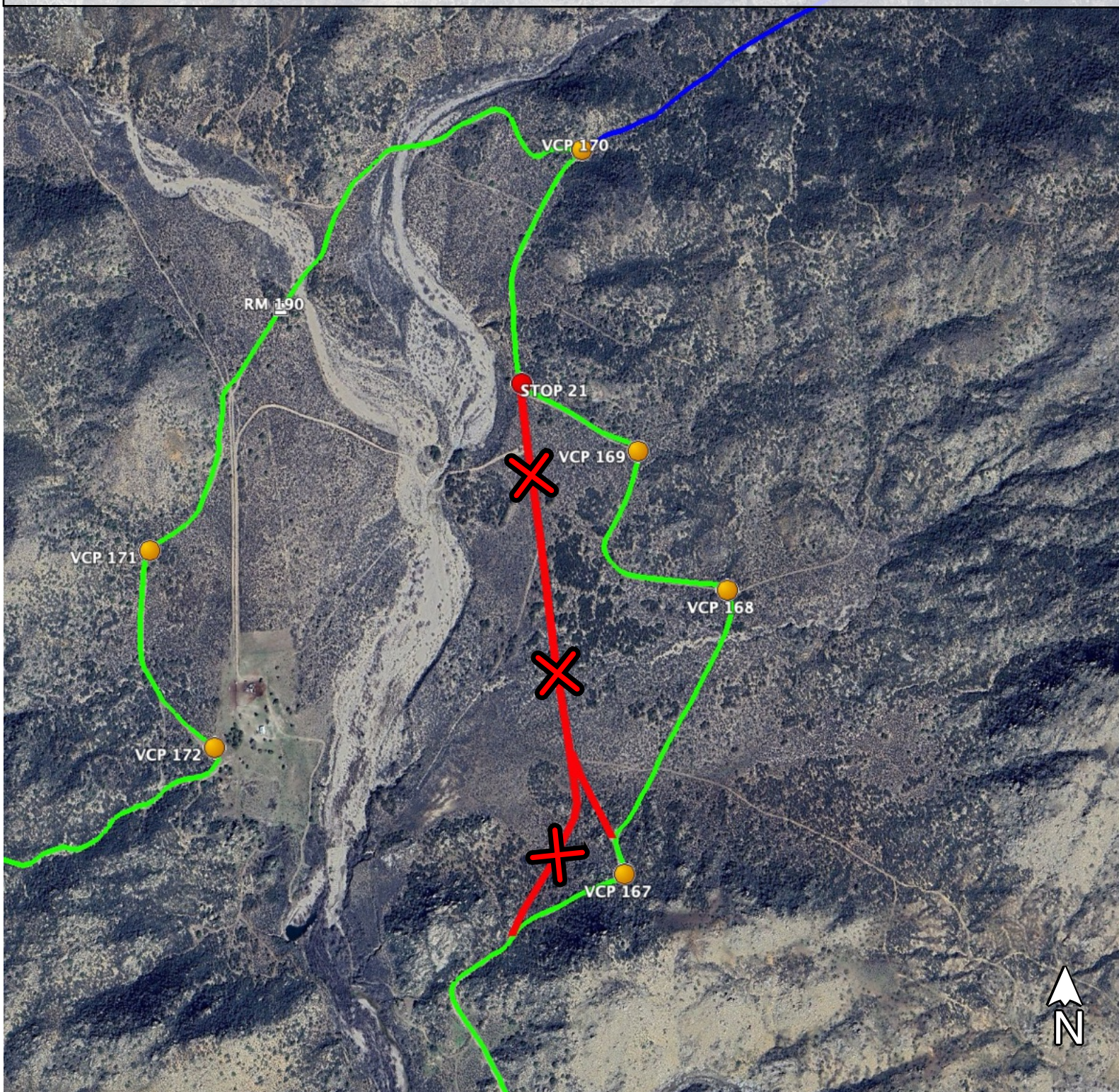
LINE 14

- For **ALL CATEGORIES / CLASSES**.
- Race Course in **GREEN**.
- Forbidden trails in **RED**.
- Penalty: from 4 hours to disqualification.
- Reference: Ej. Tepi - Ej. Leandro Valle.



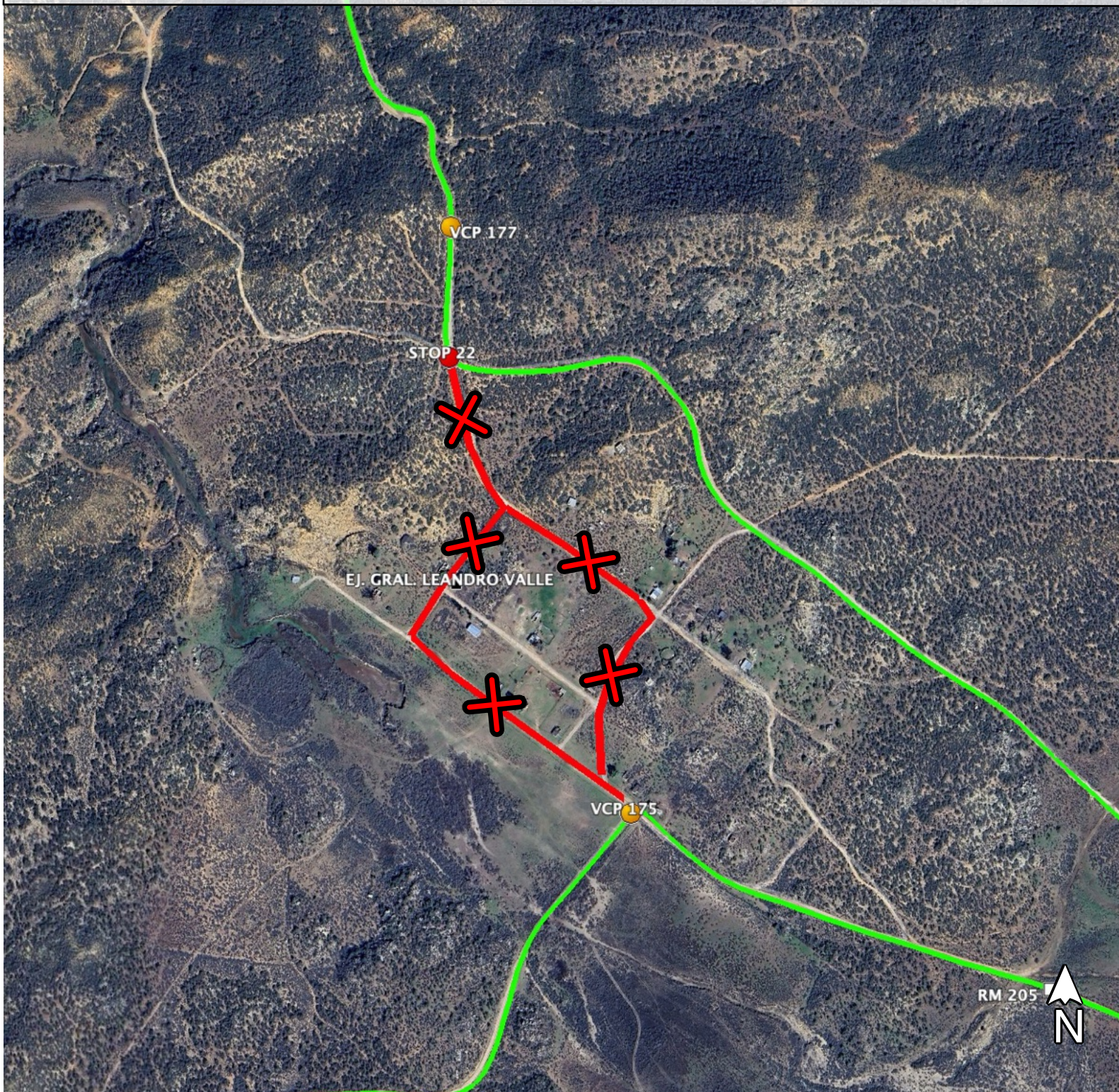
LINE 15

- For **ALL CATEGORIES / CLASSES**.
- Race Course in **GREEN**.
- Forbidden trails in **RED**.
- Penalty: from 4 hours to disqualification.
- Reference: Rancho Tepi.



LINE 16

- For **ALL CATEGORIES / CLASSES**.
- Race Course in **GREEN**.
- Forbidden trails in **RED**.
- Penalty: from 4 hours to disqualification.
- Reference: Ej. Leandro Valle.



LINE 17

- For **ALL CATEGORIES / CLASSES**.
- Race Course in **GREEN**.
- Forbidden trails in **RED**.
- Penalty: from 4 hours to disqualification.
- Reference: Valle de La Trinidad - Ej. Leandro Valle Road.

DANGER 14

VCP 182

STOP 23

VCP 181

VCP 180

VCP 179

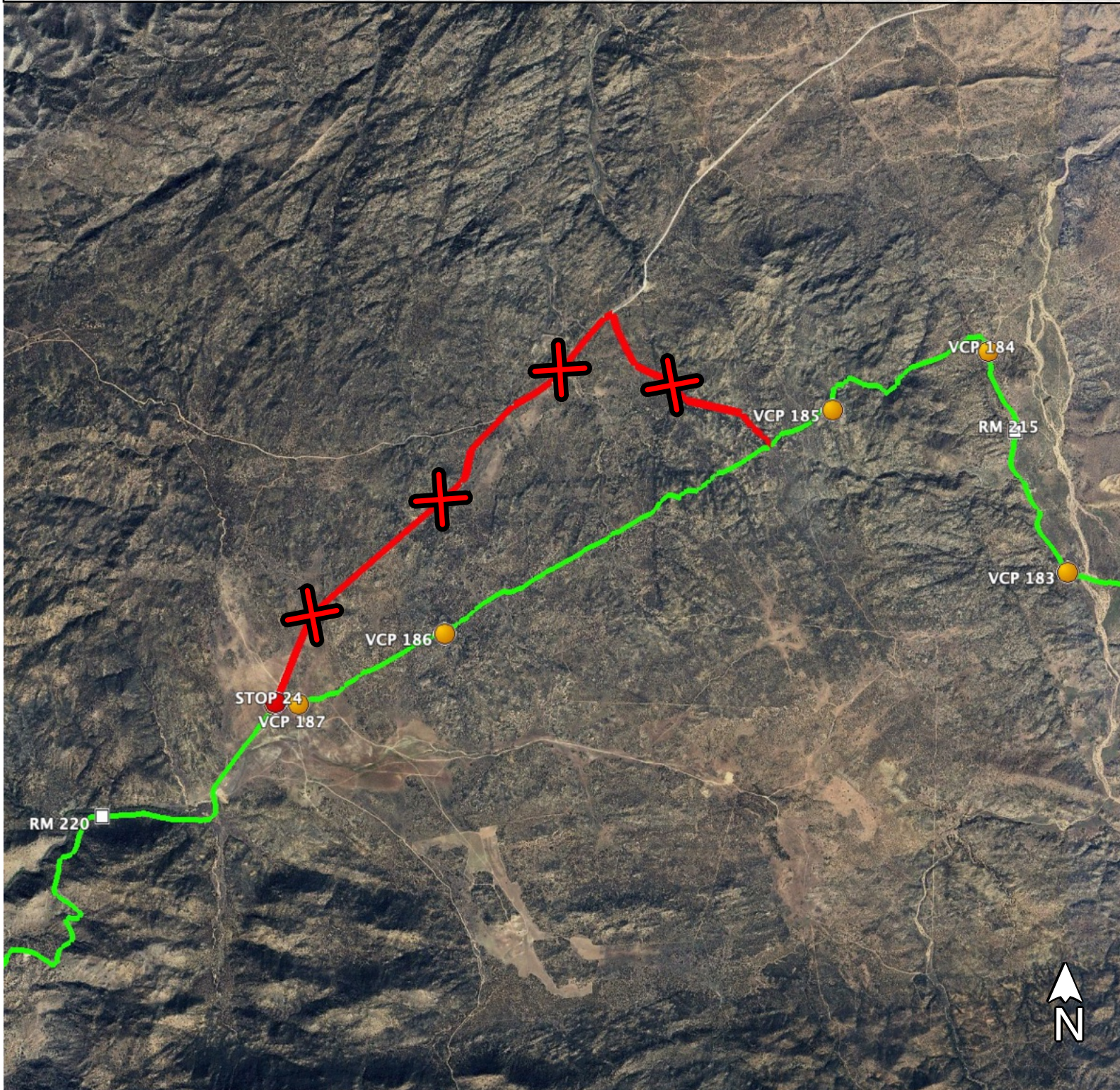
RM 210

VCP 178



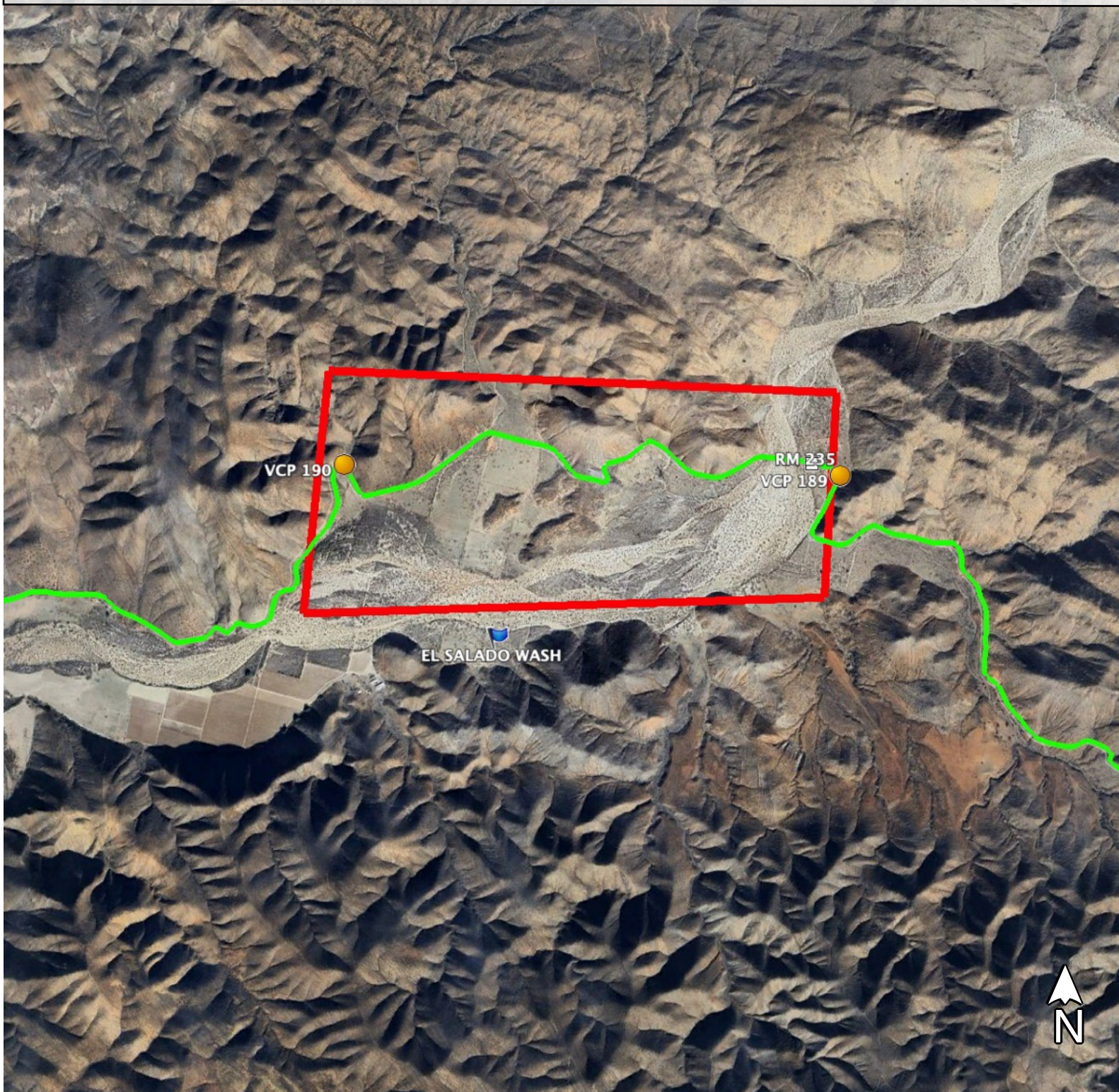
LINE 18

- For **ALL CATEGORIES / CLASSES**.
- Race Course in **GREEN**.
- Forbidden trails in **RED**.
- Penalty: from 4 hours to disqualification.
- Reference: Power Line - Crossover Road.



LINE 19

- For **ALL CATEGORIES / CLASSES**.
- Race Course in **GREEN**.
- Forbidden trails in **RED**.
- Penalty: from 4 hours to disqualification.
- Reference: El Salado Wash - Crossover Road.



LINE 20

- For **ALL CATEGORIES / CLASSES**.
- Race Course in **GREEN**.
- Forbidden trails in **RED**.
- Penalty: from 4 hours to disqualification.
- Reference: Llano Colorado - Crossover Road.

